



NET
GENETİK




Genus

ABS


Türkiye Tek Yetkili Distribütörü **NET GENETİK**

www.NETGENETIK.COM

BEEF INFOCUS™

Beef InFocus™ for the best result over
your lowest genetic merit cows



The Winning Game Plan



Sexcel® is delivering on its promise with unrivalled fertility!
A 3.3% higher conception rate for Holstein cows and 3.0%
higher conception rate for Holstein heifers.

Beef InFocus™



CONCEPTION
RATE



STILLBIRTH



GESTATION
LENGTH



CALVING
DIFFICULTY

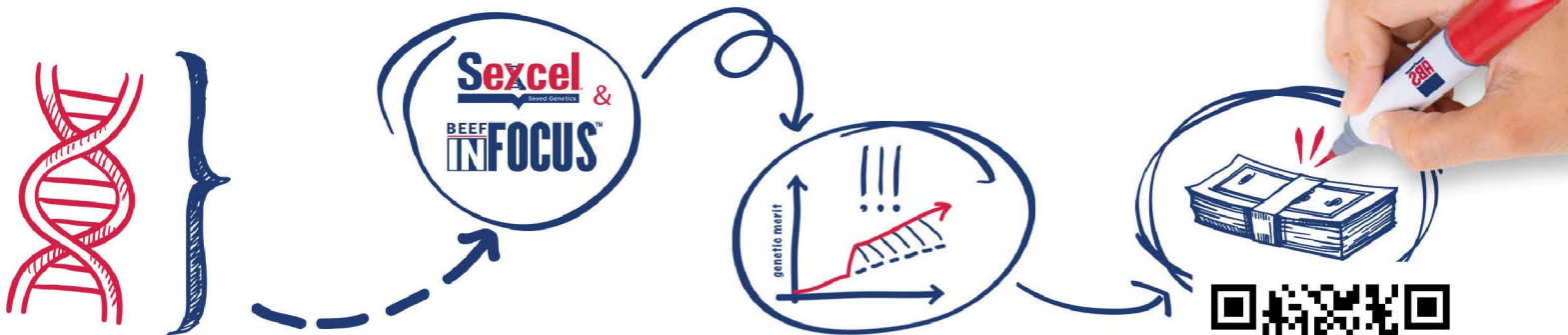
Our experts will help you build a dairy and
beef strategy utilising Sexcel® to make better
cows faster and create an extra revenue
steam from Beef InFocus™ genetics.

When only ABS have the genetics, technology
and expertise to deliver the winning game
plan for you, why accept anything less?

#winninggameplan
#dontbeconventional



Multiply your best cows by breeding them to Sexcel



For more information on the Winning Game Plan and maximising your genetic growth, scan the QR code or head to our website





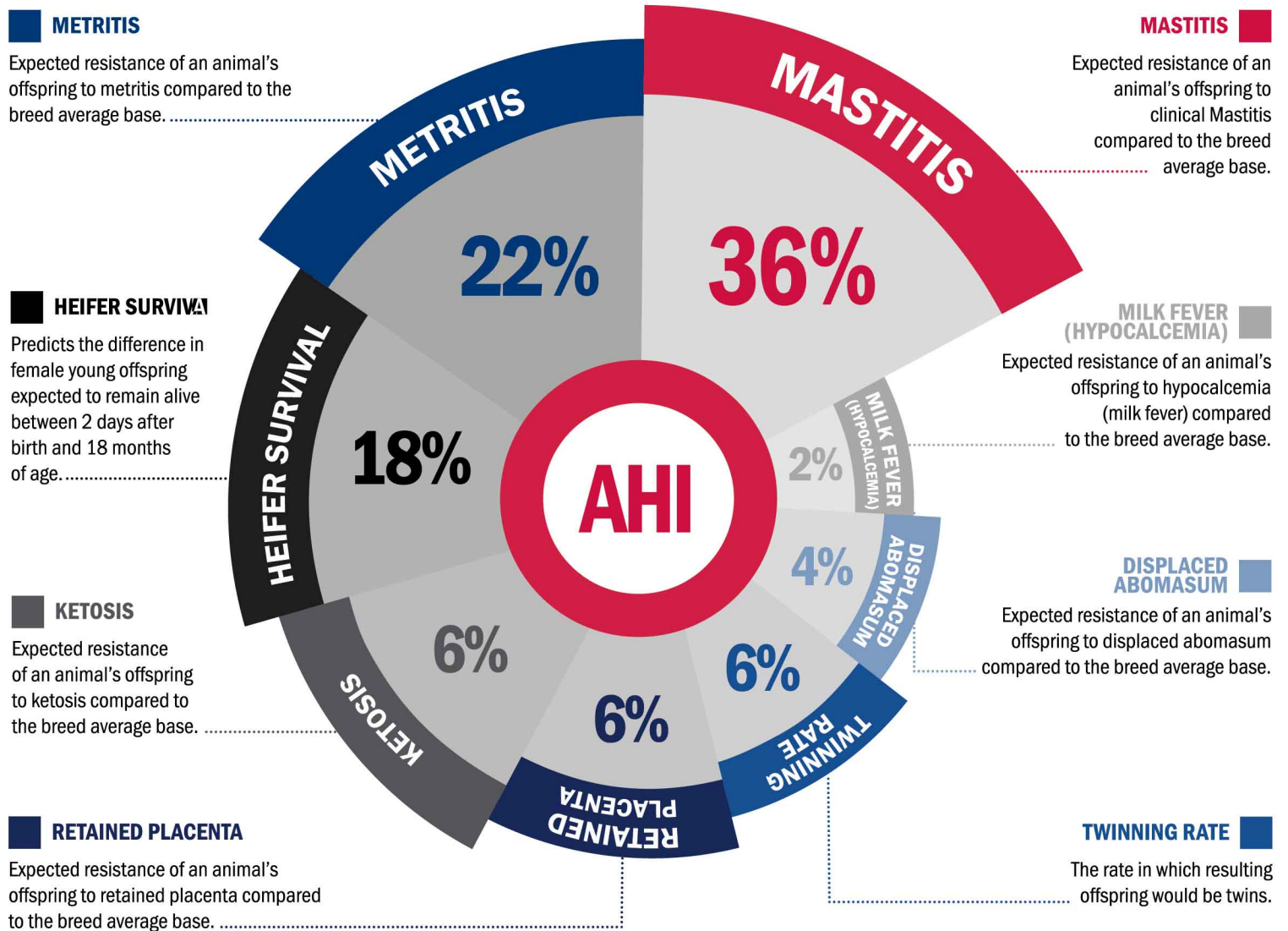
ABS HEALTH INDEX

COMBINING SCIENCE AND DATA TO CREATE HEALTHIER ANIMALS

As a dairy producer, you have a lot of things on your mind, including the health of your animals. Health plays a crucial role in your success and sustainability. We understand that many factors influence the health of an animal, including genetics. Today, you can analyze **several disease-related traits** that predict the animal's susceptibility.

With all the unique traits, making a sound decision can be confusing and overwhelming. Therefore, ABS developed a tool for producers to use to simplify selection for health in their genetic plan. The ABS Health Index (AHI) combines **eight related health events into a single simple metric** based on overall impact. Unlike other health and wellness indexes, we give you the flexibility through a Custom Index to control the amount of emphasis you desire for health traits in your genetic plan. Take a deeper look into AHI below.

DISEASE-RELATED TRAITS EVALUATED IN THE ABS HEALTH INDEX





NM\$: +995

TPI®: +2844

| Production | | Dtrs: 0 Herds: 0 |
|------------|-----------|------------------|
| Milk | +1650 Lbs | 82% Rel |
| Pro | +56 Lbs | +0.02% |
| Fat | +86 Lbs | +0.08% |
| FS | +181 Lbs | |
| CM\$ | +1002 | |
| GM\$ | +908 | |
| FM\$ | +959 | |

| Health & Fertility | | |
|--------------------|------|---------|
| PL | +6.3 | 77% Rel |
| LIV | +3.1 | 74% Rel |
| DPR | -1.2 | 74% Rel |
| SCS | 2.83 | 79% Rel |
| HCR | +3.7 | 75% Rel |
| CCR | +0.4 | 77% Rel |
| CDN MSP | 103 | |
| CDN MT | 98 | |
| AHI | 112 | |

Recessives HH1T, HH2T, HH3T, HH4T, HH5T, HH6T, MWT, TC, TD, TL, TN, TR, TS, TV, TY

| Calving Traits | | | |
|----------------|------|---------|---------|
| SCE | 2.1% | 92% Rel | 490 Obs |
| DCE | 2.3% | 70% Rel | 0 Obs |
| SSB | 5.4% | 86% Rel | 467 Obs |
| DSB | 3.8% | 64% Rel | 0 Obs |

Pedigree

- SIRE: PINE- TREE ACURA-ET
- DAM: BUSH-BROS FRAZZLED 6583
- MGS: MELARRY JOSUPER FRAZZLED-ET
- MGD: BUSH-BROS DELTA 5769
- MGGS: MR MOGUL DELTA 1427-ET

Real World Data

TransitionRight® ★★★★★

Bull Fertility Conv ★★★★★

2641 Obs

| | |
|-----------------|---------------------|
| Reg. Number | 003205149682 |
| Reg. Name | BUSH-BROS ACADIA-ET |
| Registry Status | 99%-I |
| Date of Birth | 2020-02-26 |
| EFI | 10.8% |
| aAa | |
| DMS | |
| Kappa Casein | BB |
| Beta Casein | A2/A2 |
| CDCB | 12/2023 |
| Controller | ABS Global |

| Conformation | Dtrs: 0 Herds: 0 PTAT Rel: 80% | | | | | |
|--------------|--------------------------------|----|---|---|---|------------------------|
| | -2 | -1 | 0 | 1 | 2 | |
| PTAT | | | █ | | | 0.19 |
| UDC | | | █ | | | 0.71 |
| FLC | | | █ | | | 0.41 |
| BWC | | █ | | | | -0.91 |
| ST | | █ | | | | -1.03 Short |
| SG | | █ | | | | -0.60 Frail |
| BD | | █ | | | | -0.79 Shallow |
| DF | | | █ | | | 0.22 Open |
| RA | | █ | | | | -0.70 High Pins |
| TW | | █ | | | | -0.45 Narrow |
| RLSV | | | █ | | | 0.24 Curved |
| RLRV | | | █ | | | 0.03 Straight |
| FA | | | █ | | | -0.29 Low |
| FLS | | | █ | | | 0.24 High |
| FUA | | | █ | | | 0.50 Strong |
| UH | | | █ | | | 0.78 High |
| UW | | | █ | | | 0.68 Wide |
| UC | | | █ | | | 0.19 Strong |
| UD | | | █ | | | -0.17 Deep |
| FTP | | | █ | | | 0.99 Close |
| RTP | | | █ | | | 0.89 Close |
| TL | | █ | | | | -0.91 Short |



4TH DAM: Seagull-Bay Oman Mirror-ET VG-86

Pedigree

- SIRE: MR RI-VAL-RE FREE BILLY-ET
- DAM: PINE-TREE 6586 FRAZ 7683-ET
- MGS: MELARRY JOSUPER FRAZZLED-ET
- MGD: GREEN-BANKS DAMARIS 6586-ET
- MGGS: S-S-I STERLING DAMARIS-ET

Real World Data

TransitionRight® ★★
 Bull Fertility Conv ★★★★★
 3828 Obs

Reg. Number 003200650524
 Reg. Name FB 7683 BILLY ALONSO-ET
 Registry Status 99%-I
 Date of Birth 2019-04-01
 EFI 10.5%
 aAa 342
 DMS
 Kappa Casein AA
 Beta Casein A2/A2
 CDCB 1 2/2023
 Controller ABS Global

NM\$: +1106

TPI®: +2969

Production Dtrs: 58 Herds: 14

| | | |
|------|-----------|---------|
| Milk | +1440 Lbs | 92% Rel |
| Pro | +65 Lbs | +0.07% |
| Fat | +131 Lbs | +0.26% |
| FS | +109 Lbs | |
| CM\$ | +1119 | |
| GM\$ | +1017 | |
| FM\$ | +1003 | |

Health & Fertility

| | | |
|---------|------|---------|
| PL | +5.0 | 82% Rel |
| LIV | +1.5 | 78% Rel |
| DPR | -2.2 | 80% Rel |
| SCS | 2.96 | 88% Rel |
| HCR | +1.5 | 86% Rel |
| CCR | -0.7 | 80% Rel |
| CDN MSP | 103 | |
| CDN MT | 104 | |
| AHI | 102 | |

Recessives HH1T, HH2T, HH3T, HH4T, HH5T, HH6T, MWT, TC, TD, TL, TN, TR, TS, TV, TY

Calving Traits

| | | | |
|-----|------|---------|----------|
| SCE | 2.0% | 96% Rel | 1564 Obs |
| DCE | 2.2% | 86% Rel | 30 Obs |
| SSB | 5.3% | 93% Rel | 1724 Obs |
| DSB | 4.7% | 83% Rel | 29 Obs |

Conformation Dtrs: 12 Herds: 9 PTAT Rel: 85%

| | -2 | -1 | 0 | 1 | 2 | |
|------|----|----|---|---|---|-----------------|
| PTAT | | | | █ | | 0.37 |
| UDC | | | | █ | | 0.54 |
| FLC | | | | █ | | 0.20 |
| BWC | | | █ | | | -0.38 |
| ST | | █ | | | | -0.62 Short |
| SG | | █ | | | | -0.31 Frail |
| BD | | █ | | | | -0.44 Shallow |
| DF | | | █ | | | 0.21 Open |
| RA | | █ | | | | -0.75 High Pins |
| TW | | | | █ | | 0.70 Wide |
| RLSV | | | | █ | | 1.10 Curved |
| RLRV | | | | █ | | 0.18 Straight |
| FA | | █ | | | | -0.42 Low |
| FLS | | | | █ | | 0.09 High |
| FUA | | | | █ | | 0.33 Strong |
| UH | | | | █ | | 0.55 High |
| UW | | | | █ | | 0.66 Wide |
| UC | | | | █ | | 0.46 Strong |
| UD | | | | █ | | -0.07 Deep |
| FTP | | | | █ | | 0.12 Close |
| RTP | | | | █ | | 0.50 Close |
| TL | | | | █ | | 0.37 Long |





5TH DAM: De-Su 363-ET EX-90

Pedigree

- SIRE: DENOVO 16219 ALADDIN-ET
- DAM: DENOVO PERK 3380-ET
- MGS: FB 6860 SPECTRE PERK-ET
- MGD: DENOVO ACHIEVER 8210-ET
- MGGS: ABS ACHIEVER-ET

Real World Data

TransitionRight® ★★

Bull Fertility Conv

| | |
|-----------------|-----------------------|
| Reg. Number | 003238258712 |
| Reg. Name | DENOVO 18681 ASPEN-ET |
| Registry Status | 99%-I |
| Date of Birth | 2021-10-23 |
| EFI | 10.9% |
| aAa | 243 |
| DMS | |
| Kappa Casein | AB |
| Beta Casein | A2/A2 |
| CDCB | 12/2023 |
| Controller | ABS Global |

NM\$: +1041

TPI®: +2938

| Production | | Dtrs: 0 Herds: 0 |
|------------|-----------|------------------|
| Milk | +1478 Lbs | 81% Rel |
| Pro | +64 Lbs | +0.06% |
| Fat | +119 Lbs | +0.21% |
| FS | +217 Lbs | |
| CM\$ | +1051 | |
| GM\$ | +1017 | |
| FM\$ | +952 | |

Health & Fertility

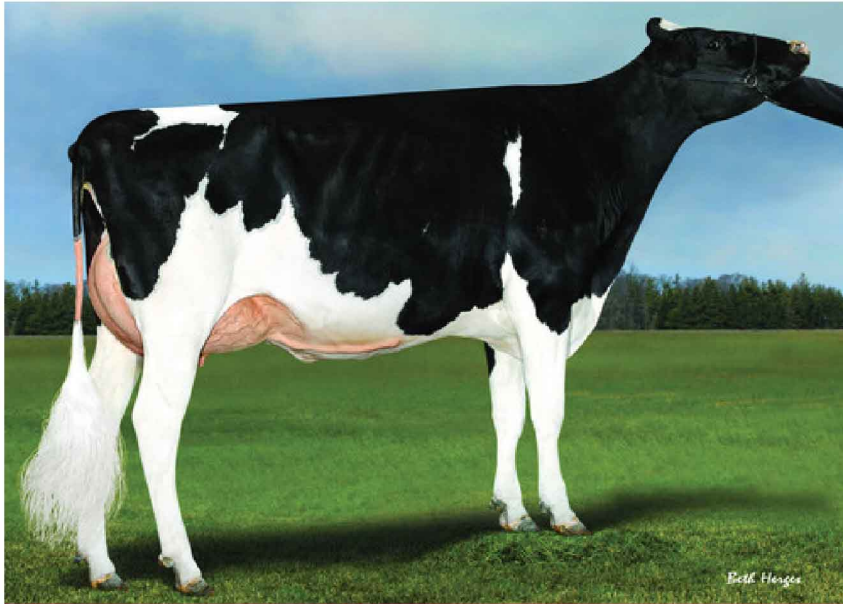
| | | |
|---------|------|---------|
| PL | +3.6 | 75% Rel |
| LIV | +1.2 | 72% Rel |
| DPR | -1.0 | 74% Rel |
| SCS | 3.07 | 77% Rel |
| HCR | +1.8 | 73% Rel |
| CCR | +0.4 | 74% Rel |
| CDN MSP | 106 | |
| CDN MT | 102 | |
| AHI | 98 | |

Recessives HH1T, HH2T, HH3T, HH4T, HH5T, HH6T, MWT, TC, TD, TL, TN, TP, TR, TS, TV, TY

Calving Traits

| | | | |
|-----|------|---------|-------|
| SCE | 1.8% | 63% Rel | 0 Obs |
| DCE | 2.3% | 61% Rel | 0 Obs |
| SSB | 5.6% | 59% Rel | 0 Obs |
| DSB | 3.7% | 59% Rel | 0 Obs |

| Conformation | Dtrs: 0 Herds: 0 PTAT Rel: 78% | | | | |
|--------------|--------------------------------|----|---|---|---------------|
| | -2 | -1 | 0 | 1 | 2 |
| PTAT | | | | | 0.56 |
| UDC | | | | | 0.69 |
| FLC | | | | | 0.30 |
| BWC | | | | | -0.71 |
| ST | | | | | 0.24 Tall |
| SG | | | | | -0.34 Frail |
| BD | | | | | -0.15 Shallow |
| DF | | | | | 1.01 Open |
| RA | | | | | 0.99 Sloped |
| TW | | | | | -0.19 Narrow |
| RLSV | | | | | 0.59 Curved |
| RLRV | | | | | 0.33 Straight |
| FA | | | | | -0.25 Low |
| FLS | | | | | 0.38 High |
| FUA | | | | | 0.58 Strong |
| UH | | | | | 1.03 High |
| UW | | | | | 0.98 Wide |
| UC | | | | | 0.62 Strong |
| UD | | | | | 0.39 Shallow |
| FTP | | | | | 1.48 Close |
| RTP | | | | | 1.37 Close |
| TL | | | | | -1.81 Short |



DAM: Denovo Honda 51-ET VG-85

NM\$: +1020

TPI®: +2925

| Production | | Dtrs: 0 Herds: 0 |
|------------|-----------|------------------|
| Milk | +1513 Lbs | 82% Rel |
| Pro | +69 Lbs | +0.07% |
| Fat | +107 Lbs | +0.17% |
| FS | +179 Lbs | |
| CM\$ | +1034 | |
| GM\$ | +942 | |
| FM\$ | +908 | |

| Health & Fertility | | |
|--------------------|------|---------|
| PL | +4.0 | 76% Rel |
| LIV | +1.7 | 72% Rel |
| DPR | -2.4 | 75% Rel |
| SCS | 2.94 | 78% Rel |
| HCR | -0.4 | 73% Rel |
| CCR | -2.0 | 75% Rel |
| CDN MSP | 105 | |
| CDN MT | 100 | |
| AHI | 99 | |

Recessives HH1T, HH2T, HH3T, HH4T, HH5T, HH6T, MWT, TC, TD, TL, TN, TP, TR, TS, TV, TY

| Calving Traits | | | |
|----------------|------|---------|-------|
| SCE | 1.7% | 71% Rel | 2 Obs |
| DCE | 1.9% | 70% Rel | 0 Obs |
| SSB | 5.9% | 64% Rel | 2 Obs |
| DSB | 3.8% | 64% Rel | 0 Obs |

Pedigree

- SIRE: DENOVO 16219 ALADDIN-ET
- DAM: DENOVO HONDA 51-ET
- MGS: N-SPRINGHOPE HONDA-ET
- MGD: DE-SU FRAZZLED 6984-ET
- MGGS: MELARRY JOSUPER FRAZZLED-ET

Real World Data

TransitionRight® ★★

Bull Fertility Conv ★★★★★

613 Obs

| | |
|-----------------|-----------------------|
| Reg. Number | 003230985820 |
| Reg. Name | DENOVO 17885 ASTER-ET |
| Registry Status | 99%-1 |
| Date of Birth | 2021-03-14 |
| EFI | 10.6% |
| aAa | |
| DMS | |
| Kappa Casein | AB |
| Beta Casein | A2/A2 |
| CDCB | 12/2023 |
| Controller | ABS Global |

| Conformation | Dtrs: 0 Herds: 0 PTAT Rel: 79% | | | | | |
|--------------|--------------------------------|----|---|---|---|---------------|
| | -2 | -1 | 0 | 1 | 2 | |
| PTAT | | | | █ | | 0.92 |
| UDC | | | | █ | | 1.18 |
| FLC | | | | █ | | 0.37 |
| BWC | | █ | | | | -0.95 |
| ST | | | █ | | | 0.12 Tall |
| SG | | █ | | | | -0.51 Frail |
| BD | | █ | | | | -0.42 Shallow |
| DF | | | | █ | | 1.13 Open |
| RA | | | | █ | | 0.35 Sloped |
| TW | | █ | | | | -0.26 Narrow |
| RLSV | | | | █ | | 0.48 Curved |
| RLRV | | | | █ | | -0.08 Hock-In |
| FA | | | █ | | | -0.15 Low |
| FLS | | | | █ | | 0.54 High |
| FUA | | | | █ | | 0.61 Strong |
| UH | | | | █ | | 2.16 High |
| UW | | | | █ | | 1.71 Wide |
| UC | | | | █ | | 0.35 Strong |
| UD | | | | █ | | 0.57 Shallow |
| FTP | | | | █ | | -0.11 Wide |
| RTP | | | | █ | | 0.06 Close |
| TL | | | | █ | | 0.31 Long |





6TH DAM: Sully Shottle May-TW EX-91

Pedigree

- SIRE: PINE-TREE ACURA-ET
- DAM: DENOVO YODA 8802-ET
- MGS: CAL-ROY-AL YODA-ET
- MGD: DE-SU FLAGSHIP 6422-ET
- MGGS: S-S-I 1STCLASS FLAGSHIP-ET

Real World Data

TransitionRight® ★★

Bull Fertility Conv ★

5253 Obs

| | |
|-----------------|------------------------|
| Reg. Number | 003210133228 |
| Reg. Name | DENOVO 16719 AUGUST-ET |
| Registry Status | 99%-I |
| Date of Birth | 2020-01-29 |
| EFI | 10.8% |
| aAa | |
| DMS | |
| Kappa Casein | AB |
| Beta Casein | A1/A2 |
| CDCB | 12/2023 |
| Controller | ABS Global |

NM\$: +983

TPI®: +2995

Production

| | | Dtrs: 0 Herds: 0 |
|------|-----------|------------------|
| Milk | +1242 Lbs | 82% Rel |
| Pro | +56 Lbs | +0.06% |
| Fat | +96 Lbs | +0.17% |
| FS | +97 Lbs | |
| CM\$ | +996 | |
| GM\$ | +969 | |
| FM\$ | +891 | |

Health & Fertility

| | | |
|---------|------|---------|
| PL | +4.9 | 77% Rel |
| LIV | +2.0 | 74% Rel |
| DPR | +0.6 | 77% Rel |
| SCS | 2.86 | 79% Rel |
| HCR | +4.7 | 77% Rel |
| CCR | +2.0 | 77% Rel |
| CDN MSP | 101 | |
| CDN MT | 105 | |
| AHI | 102 | |

Recessives HH1T, HH2T, HH3T, HH4T, HH5T, HH6T, MWT, TC, TD, TL, TN, TR, TS, TV, TY

Calving Traits

| | | | |
|-----|------|---------|---------|
| SCE | 2.2% | 95% Rel | 837 Obs |
| DCE | 2.1% | 70% Rel | 1 Obs |
| SSB | 6.2% | 90% Rel | 818 Obs |
| DSB | 4.2% | 64% Rel | 1 Obs |

| Conformation | Dtrs: 0 Herds: 0 PTAT Rel: 80% | | | | | |
|--------------|--------------------------------|----|---|---|---|----------------|
| | -2 | -1 | 0 | 1 | 2 | |
| PTAT | | | | █ | | 1.30 |
| UDC | | | | █ | | 1.81 |
| FLC | | | █ | | | 0.42 |
| BWC | | | | | | 0.00 |
| ST | | | █ | | | 0.68 Tall |
| SG | | | █ | | | 0.20 Strong |
| BD | | | █ | | | 0.24 Deep |
| DF | | | █ | | | 0.93 Open |
| RA | | | █ | | | 1.37 Sloped |
| TW | | | █ | | | 0.72 Wide |
| RLSV | | █ | | | | -1.06 Straight |
| RLRV | | | █ | | | 0.59 Straight |
| FA | | | █ | | | 0.65 Steep |
| FLS | | | █ | | | 0.54 High |
| FUA | | | █ | | | 1.66 Strong |
| UH | | | █ | | | 2.43 High |
| UW | | | █ | | | 2.12 Wide |
| UC | | | █ | | | 1.03 Strong |
| UD | | | █ | | | 1.55 Shallow |
| FTP | | | █ | | | 1.31 Close |
| RTP | | | █ | | | 1.38 Close |
| TL | | | █ | | | -0.32 Short |



Kathy DeBruin

MGD: Pine-Tree Era Achie 7593-ET GP-82

Pedigree

- SIRE: DENOVO 16219 ALADDIN-ET
- DAM: PINE-TREE 7593 LEGA 8469-ET
- MGS: PINE-TREE CW LEGACY-ET
- MGD: PINE-TREE ERA ACHIE 7593-ET
- MGGS: ABS ACHIEVER-ET

Real World Data

TransitionRight® ★★

Bull Fertility Conv

| | |
|-----------------|--------------------------|
| Reg. Number | 003230985891 |
| Reg. Name | PINE-TREE DENOVO AVON-ET |
| Registry Status | 99%-1 |
| Date of Birth | 2021-03-26 |
| EFI | 10.8% |
| aAa | 354 |
| DMS | |
| Kappa Casein | AE |
| Beta Casein | A1/A2 |
| CDCB | 12/2023 |
| Controller | ABS Global |

NM\$: +1117

TPI®: +2927

| Production | Dtrs: 0 Herds: 0 | |
|------------|------------------|---------|
| Milk | +705 Lbs | 82% Rel |
| Pro | +50 Lbs | +0.10% |
| Fat | +124 Lbs | +0.34% |
| FS | +457 Lbs | |
| CM\$ | +1137 | |
| GM\$ | +1066 | |
| FM\$ | +976 | |

| Health & Fertility | | |
|--------------------|------|---------|
| PL | +4.7 | 76% Rel |
| LIV | +1.0 | 72% Rel |
| DPR | -1.9 | 75% Rel |
| SCS | 2.82 | 77% Rel |
| HCR | +3.2 | 73% Rel |
| CCR | -0.5 | 75% Rel |
| CDN MSP | 104 | |
| CDN MT | 101 | |
| AHI | 104 | |

Recessives HH1T, HH2T, HH3T, HH4T, HH5T, HH6T, MWT, TC, TD, TL, TN, TP, TR, TS, TV, TY

| Calving Traits | | | |
|----------------|------|---------|-------|
| SCE | 1.8% | 63% Rel | 0 Obs |
| DCE | 2.7% | 61% Rel | 0 Obs |
| SSB | 6.2% | 59% Rel | 0 Obs |
| DSB | 4.5% | 59% Rel | 0 Obs |

| Conformation | Dtrs: 0 Herds: 0 PTAT Rel: 79% | | | | | |
|--------------|--------------------------------|----|---|---|---|------------------------|
| | -2 | -1 | 0 | 1 | 2 | |
| PTAT | | | | | | 0.22 |
| UDC | | | | | | 0.86 |
| FLC | | | | | | 0.28 |
| BWC | | | | | | -1.78 |
| ST | | | | | | -1.50 Short |
| SG | | | | | | -1.37 Frail |
| BD | | | | | | -1.25 Shallow |
| DF | | | | | | 0.37 Open |
| RA | | | | | | -0.42 High Pins |
| TW | | | | | | -1.05 Narrow |
| RLSV | | | | | | 0.15 Curved |
| RLRV | | | | | | -0.03 Hock-In |
| FA | | | | | | -1.00 Low |
| FLS | | | | | | 0.00 High |
| FUA | | | | | | 0.37 Strong |
| UH | | | | | | 0.98 High |
| UW | | | | | | 0.75 Wide |
| UC | | | | | | 0.14 Strong |
| UD | | | | | | 0.01 Shallow |
| FTP | | | | | | 0.42 Close |
| RTP | | | | | | 0.35 Close |
| TL | | | | | | -0.65 Short |



CABBIE

29H020735 | LEVEL-PLAIN CABBIE-ET



FULL SISTER TO DAM: Level-Plain Acura Vent-ET VG-85

NM\$: +1045

TPI®: +2940

| Production | | Dtrs: 0 Herds: 0 |
|------------|-----------|------------------|
| Milk | +1220 Lbs | 81% Rel |
| Pro | +52 Lbs | +0.05% |
| Fat | +103 Lbs | +0.19% |
| FS | +193 Lbs | |
| CM\$ | +1055 | |
| GM\$ | +993 | |
| FM\$ | +969 | |

| Health & Fertility | | |
|--------------------|------|---------|
| PL | +5.8 | 75% Rel |
| LIV | +3.7 | 72% Rel |
| DPR | -0.3 | 74% Rel |
| SCS | 2.90 | 76% Rel |
| HCR | +3.0 | 74% Rel |
| CCR | +1.3 | 74% Rel |
| CDN MSP | 108 | |
| CDN MT | 101 | |
| AHI | 106 | |

Recessives HH1T, HH2T, HH3T, HH4T, HH5T, HH6T, MWT, TC, TD, TL, TN, TP, TR, TS, TV, TY

| Calving Traits | | | |
|----------------|------|---------|-------|
| SCE | 1.9% | 63% Rel | 0 Obs |
| DCE | 2.2% | 58% Rel | 0 Obs |
| SSB | 5.4% | 60% Rel | 0 Obs |
| DSB | 4.8% | 56% Rel | 0 Obs |

Pedigree

- SIRE: DENOVO 16241 CHANDLER-ET
- DAM: LEVEL-PLAIN ACURA VIBE-ET
- MGS: PINE-TREE ACURA-ET
- MGD: LEVEL-PLAIN ACH VIBRANT-ET
- MGGS: ABS ACHIEVER-ET

Real World Data

TransitionRight® ★★ ★

Bull Fertility Conv ★★ ★

1191 Obs

| | |
|-----------------|-----------------------|
| Reg. Number | 003239496430 |
| Reg. Name | LEVEL-PLAIN CABBIE-ET |
| Registry Status | 99%-I |
| Date of Birth | 2021-06-10 |
| EFI | 10.7% |
| aAa | 432 |
| DMS | |
| Kappa Casein | BB |
| Beta Casein | A2/A2 |
| CDCB | 1 2/2023 |
| Controller | ABS Global |

| Conformation | Dtrs: 0 Herds: 0 PTAT Rel: 78% | | | | | |
|--------------|--------------------------------|----|---|---|---|----------------|
| | -2 | -1 | 0 | 1 | 2 | |
| PTAT | | | | █ | | 0.68 |
| UDC | | | | █ | | 0.82 |
| FLC | | | | █ | | 0.56 |
| BWC | | █ | | | | -0.75 |
| ST | | █ | | | | -0.55 Short |
| SG | | █ | | | | -0.41 Frail |
| BD | | █ | | | | -0.39 Shallow |
| DF | | | | █ | | 0.58 Open |
| RA | | | | █ | | 0.73 Sloped |
| TW | | | █ | | | -0.12 Narrow |
| RLSV | | █ | | | | -0.71 Straight |
| RLRV | | | | █ | | 0.57 Straight |
| FA | | | | █ | | 0.19 Steep |
| FLS | | | | █ | | 0.39 High |
| FUA | | | | █ | | 0.77 Strong |
| UH | | | | █ | | 0.70 High |
| UW | | | | █ | | 1.20 Wide |
| UC | | | | █ | | 0.00 Strong |
| UD | | | | █ | | 0.42 Shallow |
| FTP | | | | █ | | 0.89 Close |
| RTP | | | | █ | | 0.56 Close |
| TL | | █ | | | | -1.18 Short |



MGD: ABS 7432 April-ET VG-87

NM\$: +910

TPI®: +2835

| Production | Dtrs: 0 Herds: 0 | |
|------------|------------------|---------|
| Milk | +572 Lbs | 82% Rel |
| Pro | +49 Lbs | +0.11% |
| Fat | +105 Lbs | +0.29% |
| FS | -14 Lbs | |
| CM\$ | +931 | |
| GM\$ | +812 | |
| FM\$ | +755 | |

| Health & Fertility | | |
|--------------------|------|---------|
| PL | +5.0 | 76% Rel |
| LIV | +1.9 | 72% Rel |
| DPR | -2.1 | 76% Rel |
| SCS | 2.81 | 79% Rel |
| HCR | +1.8 | 75% Rel |
| CCR | -0.1 | 75% Rel |
| CDN MSP | 103 | |
| CDN MT | 100 | |
| AHI | 109 | |

Recessives HH1T, HH2T, HH3T, HH4T, HH5T, HH6T, MWT, TC, TD, TL, TN, TP, TR, TS, TV, TY

| Calving Traits | | | |
|----------------|------|---------|-------|
| SCE | 1.8% | 62% Rel | 0 Obs |
| DCE | 2.2% | 59% Rel | 0 Obs |
| SSB | 5.3% | 58% Rel | 0 Obs |
| DSB | 4.3% | 57% Rel | 0 Obs |

Pedigree

- SIRE: DENOVO 15953 CHALLET-ET
- DAM: DENOVO MEDLEY 9434-ET
- MGS: ABS MEDLEY-ET
- MGD: ABS 7432 APRIL-ET
- MGGS: WESTENRADE ALTASPRING-ET

Real World Data

TransitionRight® ★★★★★

Bull Fertility Conv ★★★★★

823 Obs

| | |
|-----------------|------------------------|
| Reg. Number | 003127591307 |
| Reg. Name | DENOVO 3709 CHARTER-ET |
| Registry Status | 99%-I |
| Date of Birth | 2020-10-16 |
| EFI | 10.9% |
| aAa | 345 |
| DMS | |
| Kappa Casein | BB |
| Beta Casein | A2/A2 |
| CDCB | 12/2023 |
| Controller | ABS Global |

| Conformation | Dtrs: 0 Herds: 0 PTAT Rel: 80% | | | | | |
|--------------|--------------------------------|----|---|---|---|-----------------|
| | -2 | -1 | 0 | 1 | 2 | |
| PTAT | | | | █ | | 0.61 |
| UDC | | | | █ | | 0.95 |
| FLC | | | | █ | | 0.75 |
| BWC | | | | | | 0.01 |
| ST | | | | | | 0.10 Tall |
| SG | | | | | | 0.15 Strong |
| BD | | | | | | -0.08 Shallow |
| DF | | | | | | 0.13 Open |
| RA | | █ | | | | -0.87 High Pins |
| TW | | █ | | | | -0.32 Narrow |
| RLSV | | █ | | | | -0.96 Straight |
| RLRV | | | | █ | | 1.08 Straight |
| FA | | | | █ | | 0.66 Steep |
| FLS | | | | █ | | 0.64 High |
| FUA | | | | █ | | 1.02 Strong |
| UH | | | | █ | | 1.04 High |
| UW | | | | █ | | 1.09 Wide |
| UC | | | | █ | | 0.26 Strong |
| UD | | | | █ | | 1.12 Shallow |
| FTP | | | | | | 0.13 Close |
| RTP | | | | | | 0.04 Close |
| TL | | | █ | | | -0.46 Short |



CRIMSON

29H018693 | ABS CRIMSON-ET



BULL: 29H018693 ABS CRIMSON-ET

NM\$: +796

TPI®: +2658

Production Dtrs: 7918 Herds: 1099

| | | |
|------|-----------|---------|
| Milk | +1125 Lbs | 99% Rel |
| Pro | +52 Lbs | +0.06% |
| Fat | +94 Lbs | +0.17% |
| FS | -171 Lbs | |
| CM\$ | +811 | |
| GM\$ | +683 | |
| FM\$ | +702 | |

Health & Fertility

| | | |
|---------|------|---------|
| PL | +4.5 | 98% Rel |
| LIV | +2.9 | 89% Rel |
| DPR | -2.3 | 98% Rel |
| SCS | 2.74 | 99% Rel |
| HCR | +1.7 | 96% Rel |
| CCR | -0.1 | 97% Rel |
| CDN MSP | 106 | |
| CDN MT | 106 | |
| AHI | 99 | |

Recessives HH1T, HH2T, HH3T, HH4T, HH5T, HH6T, MWT, TC, TD, TL, TN, TR, TS, TV, TY

Calving Traits

| | | | |
|-----|------|---------|----------|
| SCE | 2.1% | 99% Rel | 2958 Obs |
| DCE | 2.3% | 98% Rel | 860 Obs |
| SSB | 5.5% | 97% Rel | 2887 Obs |
| DSB | 3.8% | 97% Rel | 830 Obs |

Pedigree

- SIRE: DE-SU 13050 SPECTRE-ET
- DAM: ENDCO RUBICON CORA-ET
- MGS: EDG RUBICON-ET
- MGD: PEAK CHARM-ET
- MGGS: PINE-TREE ALTAOAK-ET

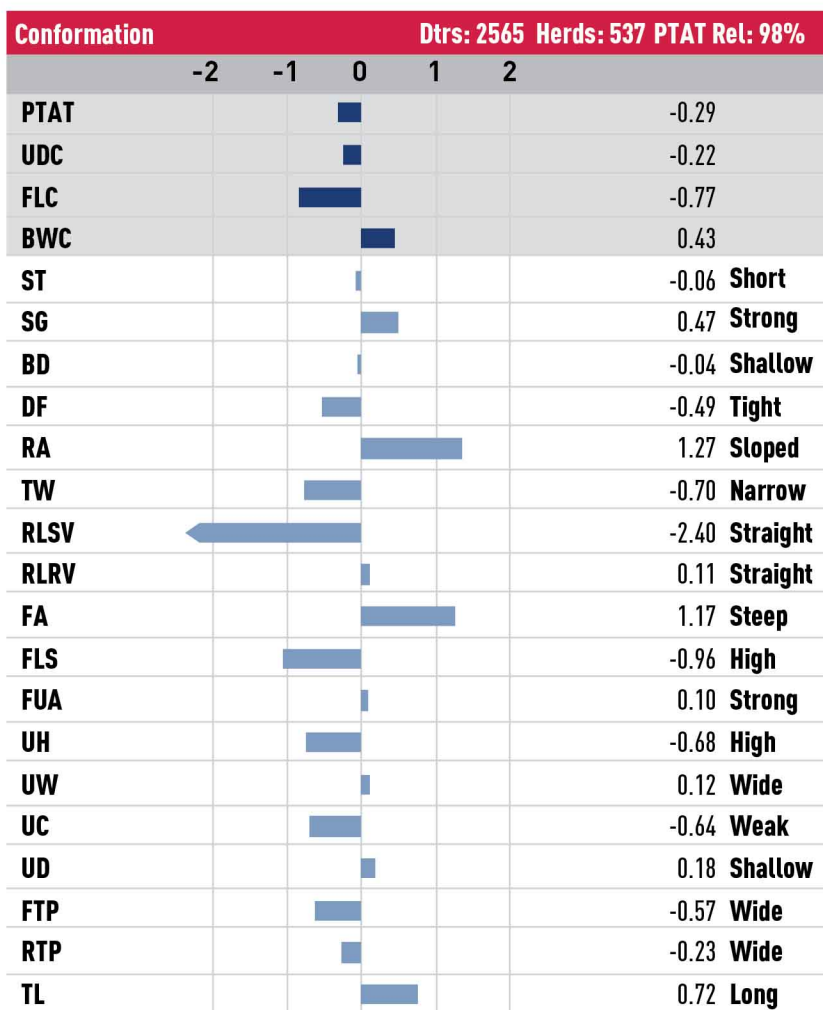
Real World Data

TransitionRight® ★★

Bull Fertility Conv ★★

691 Obs

| | |
|-----------------|----------------|
| Reg. Number | 003141494296 |
| Reg. Name | ABS CRIMSON-ET |
| Registry Status | 99%-I |
| Date of Birth | 2017-02-26 |
| EFI | 10.8% |
| aAa | 432 |
| DMS | |
| Kappa Casein | AB |
| Beta Casein | A2/A2 |
| CDCB | 12/2023 |
| Controller | ABS Global |





DAM: Kings-Ransom R Dontryathome VG-85

Pedigree

- SIRE: KINGS-RANSOM DUFFY-ET
- DAM: WILRA HERITAGE 2361-ET
- MGS: DENOVO 16255 HERITAGE-ET
- MGD: WILRA MARIUS 1849-ET
- MGGS: PROGENESIS MARIUS

Real World Data

TransitionRight® ★★★★★

Bull Fertility Conv

| | |
|-----------------|------------------|
| Reg. Number | 003228011400 |
| Reg. Name | WILRA DIOXIDE-ET |
| Registry Status | 99%-I |
| Date of Birth | 2022-07-10 |
| EFI | 10.4% |
| aAa | |
| DMS | |
| Kappa Casein | AE |
| Beta Casein | A1/A2 |
| CDCB | 12/2023 |
| Controller | ABS Global |

NM\$: +1090

TPI®: +2957

Production Dtrs: 0 Herds: 0

| | | |
|------|-----------|---------|
| Milk | +1251 Lbs | 79% Rel |
| Pro | +46 Lbs | +0.02% |
| Fat | +90 Lbs | +0.14% |
| FS | +329 Lbs | |
| CM\$ | +1099 | |
| GM\$ | +1052 | |
| FM\$ | +1043 | |

Health & Fertility

| | | |
|---------|------|---------|
| PL | +7.4 | 74% Rel |
| LIV | +3.4 | 71% Rel |
| DPR | +1.1 | 73% Rel |
| SCS | 2.79 | 75% Rel |
| HCR | +1.8 | 72% Rel |
| CCR | +2.1 | 73% Rel |
| CDN MSP | 101 | |
| CDN MT | 103 | |
| AHI | 105 | |

Recessives HH1T, HH2T, HH3T, HH4T, HH5T, HH6T, MWT, TC, TD, TL, TN, TP, TR, TV, TY

Calving Traits

| | | | |
|-----|------|---------|-------|
| SCE | 1.5% | 62% Rel | 0 Obs |
| DCE | 1.6% | 59% Rel | 0 Obs |
| SSB | 5.8% | 59% Rel | 0 Obs |
| DSB | 4.5% | 58% Rel | 0 Obs |

| Conformation | Dtrs: 0 Herds: 0 PTAT Rel: 77% | | | | |
|--------------|--------------------------------|----|---|---|-----------------|
| | -2 | -1 | 0 | 1 | 2 |
| PTAT | | | | | 0.67 |
| UDC | | | | | 1.49 |
| FLC | | | | | 0.74 |
| BWC | | | | | -1.11 |
| ST | | | | | -1.47 Short |
| SG | | | | | -0.92 Frail |
| BD | | | | | -1.28 Shallow |
| DF | | | | | -0.20 Tight |
| RA | | | | | -0.18 High Pins |
| TW | | | | | -0.60 Narrow |
| RLSV | | | | | -0.80 Straight |
| RLRV | | | | | 0.31 Straight |
| FA | | | | | 0.00 Steep |
| FLS | | | | | 0.44 High |
| FUA | | | | | 1.44 Strong |
| UH | | | | | 1.43 High |
| UW | | | | | 1.43 Wide |
| UC | | | | | 0.51 Strong |
| UD | | | | | 0.61 Shallow |
| FTP | | | | | 0.57 Close |
| RTP | | | | | 0.64 Close |
| TL | | | | | -0.99 Short |



BULL: 29H018790 Pine-Tree DURABLE-ET

NM\$: +822

TPI®: +2667

Production Dtrs: 2588 Herds: 560

| | | |
|------|----------|---------|
| Milk | +927 Lbs | 93% Rel |
| Pro | +57 Lbs | +0.10% |
| Fat | +58 Lbs | +0.08% |
| FS | +368 Lbs | |
| CM\$ | +839 | |
| GM\$ | +808 | |
| FM\$ | +683 | |

Health & Fertility

| | | |
|---------|------|---------|
| PL | +3.9 | 87% Rel |
| LIV | +1.4 | 78% Rel |
| DPR | -0.2 | 90% Rel |
| SCS | 2.94 | 91% Rel |
| HCR | +0.8 | 84% Rel |
| CCR | +0.9 | 84% Rel |
| CDN MSP | 105 | |
| CDN MT | 106 | |
| AHI | 106 | |

Recessives HH1T, HH2T, HH3T, HH4T, HH5T, HH6T, MWT, TC, TD, TL, TN, TR, TV, TY

Calving Traits

| | | | |
|-----|------|---------|--------|
| SCE | 1.5% | 83% Rel | 83 Obs |
| DCE | 2.3% | 76% Rel | 4 Obs |
| SSB | 4.8% | 73% Rel | 51 Obs |
| DSB | 4.7% | 76% Rel | 0 Obs |

Pedigree

- SIRE: DG CHARLEY
- DAM: ENDCO YODER L7933 9839-ET
- MGS: WOODCREST MOGUL YODER-ET
- MGD: T-SPRUCE LGOLD 7933-ET
- MGGS: GENERVATIONS LIQUID GOLD-ET

Real World Data

TransitionRight® ★★ ★

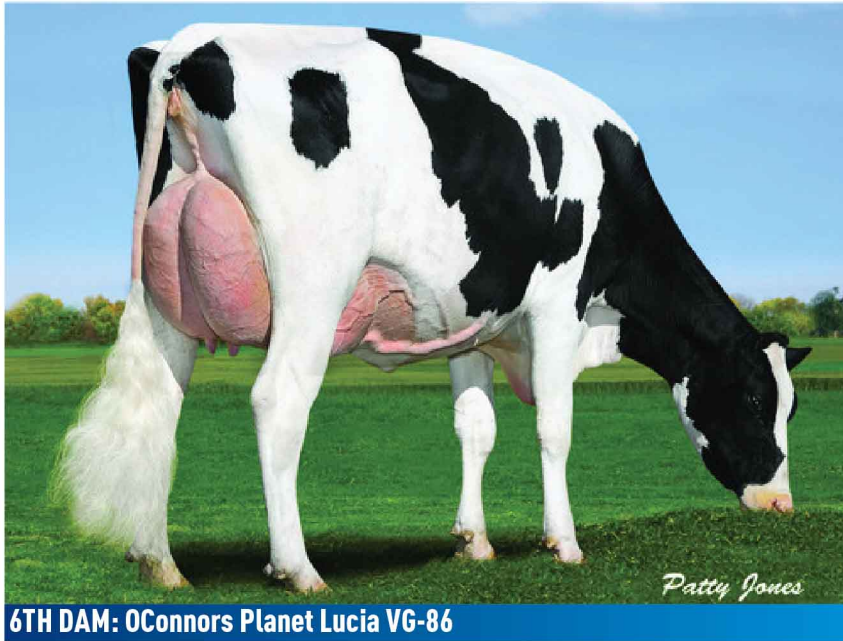
Bull Fertility Conv ★★ ★

319 Obs

| | |
|-----------------|----------------------|
| Reg. Number | 003142332706 |
| Reg. Name | PINE-TREE DURABLE-ET |
| Registry Status | 99%-I |
| Date of Birth | 2017-05-25 |
| EFI | 10.4% |
| aAa | |
| DMS | |
| Kappa Casein | BB |
| Beta Casein | A2/A2 |
| CDCB | 1 2/2023 |
| Controller | ABS Global |

Conformation Dtrs: 1241 Herds: 295 PTAT Rel: 91%

| | -2 | -1 | 0 | 1 | 2 | |
|------|----|----|---|---|---|---------------|
| PTAT | | | █ | | | 0.28 |
| UDC | | | █ | | | 0.47 |
| FLC | | | █ | | | 0.32 |
| BWC | █ | | | | | -2.40 |
| ST | | | █ | | | -0.49 Short |
| SG | █ | | | | | -2.00 Frail |
| BD | | █ | | | | -1.26 Shallow |
| DF | | | | █ | | 1.32 Open |
| RA | | | | █ | | 0.95 Sloped |
| TW | | █ | | | | -0.73 Narrow |
| RLSV | | | █ | | | 0.47 Curved |
| RLRV | | | | █ | | -0.02 Hock-In |
| FA | | | █ | | | -0.34 Low |
| FLS | | | █ | | | 0.30 High |
| FUA | | | █ | | | 0.35 Strong |
| UH | | | █ | | | 0.15 High |
| UW | | | █ | | | 0.21 Wide |
| UC | | | █ | | | 0.40 Strong |
| UD | | | █ | | | 0.45 Shallow |
| FTP | | | █ | | | 0.81 Close |
| RTP | | | █ | | | 0.88 Close |
| TL | | | █ | | | -0.38 Short |



6TH DAM: OConnors Planet Lucia VG-86

NM\$: +986

TPI®: +2897

| Production | Dtrs: 0 Herds: 0 | |
|------------|------------------|---------|
| Milk | +1391 Lbs | 81% Rel |
| Pro | +56 Lbs | +0.04% |
| Fat | +114 Lbs | +0.21% |
| FS | +251 Lbs | |
| CM\$ | +994 | |
| GM\$ | +968 | |
| FM\$ | +919 | |

| Health & Fertility | | |
|--------------------|------|---------|
| PL | +3.5 | 76% Rel |
| LIV | +0.2 | 73% Rel |
| DPR | -0.9 | 76% Rel |
| SCS | 2.99 | 78% Rel |
| HCR | +1.4 | 73% Rel |
| CCR | +0.6 | 75% Rel |
| CDN MSP | 99 | |
| CDN MT | 95 | |
| AHI | 94 | |

Recessives HH1T, HH2T, HH3T, HH4T, HH5T, HH6T, MWT, TC, TD, TL, TN, TP, TR, TS, TV, TY

| Calving Traits | | | |
|----------------|------|---------|-------|
| SCE | 1.6% | 63% Rel | 0 Obs |
| DCE | 1.8% | 62% Rel | 0 Obs |
| SSB | 5.3% | 60% Rel | 0 Obs |
| DSB | 4.4% | 60% Rel | 0 Obs |

Pedigree

- SIRE: WINSTAR MENDEL-P-ET
- DAM: AARDEMA EVERLASTING-ET
- MGS: DE-SU FRAZZLD ROME 14192-ET
- MGD: AARDEMA SUNSET BEAUTY-ET
- MGGS: FAIRMONT BAYONT ROCKSTAR-ET

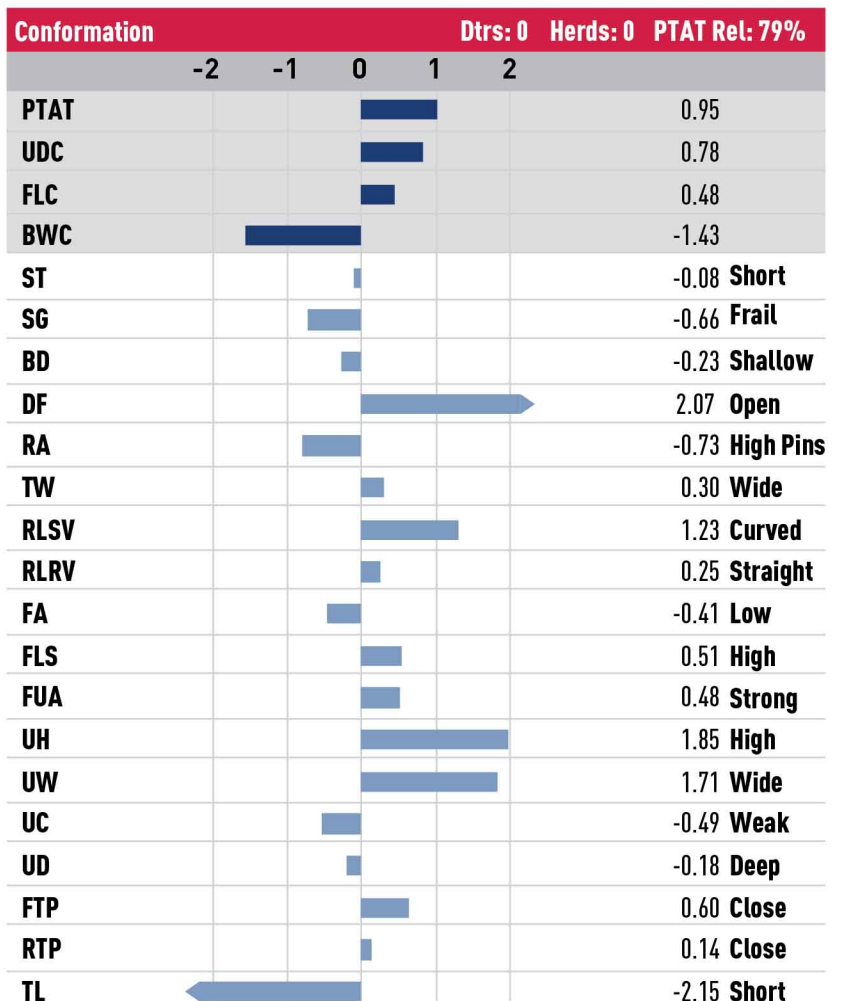
Real World Data

TransitionRight® ★★

Bull Fertility Conv ★★★★★

633 Obs

| | |
|-----------------|------------------------|
| Reg. Number | 003127591399 |
| Reg. Name | DENOVO 3801 ELDERON-ET |
| Registry Status | 99%-1 |
| Date of Birth | 2021-03-14 |
| EFI | 10.1% |
| aAa | 432 |
| DMS | |
| Kappa Casein | AA |
| Beta Casein | A2/A2 |
| CDCB | 12/2023 |
| Controller | ABS Global |





MGD: Bomaz Medley 8075-ET VG-85

NM\$: +1048

TPI®: +3030

| Production | | Dtrs: 0 Herds: 0 |
|------------|----------|------------------|
| Milk | +928 Lbs | 79% Rel |
| Pro | +57 Lbs | +0.10% |
| Fat | +100 Lbs | +0.22% |
| FS | +26 Lbs | |
| CM\$ | +1072 | |
| GM\$ | +1004 | |
| FM\$ | +901 | |

| Health & Fertility | | |
|--------------------|------|---------|
| PL | +6.0 | 74% Rel |
| LIV | +2.4 | 70% Rel |
| DPR | +0.3 | 74% Rel |
| SCS | 2.65 | 75% Rel |
| HCR | +1.9 | 72% Rel |
| CCR | +2.2 | 74% Rel |
| CDN MSP | 95 | |
| CDN MT | 99 | |
| AHI | 109 | |

Recessives HH1T, HH2T, HH3T, HH4T, HH5T, HH6T, MWT, TC, TD, TL, TN, TP, TR, TV, TY

| Calving Traits | | | |
|----------------|------|---------|-------|
| SCE | 1.7% | 62% Rel | 0 Obs |
| DCE | 1.7% | 58% Rel | 0 Obs |
| SSB | 5.4% | 58% Rel | 0 Obs |
| DSB | 3.1% | 56% Rel | 0 Obs |

Pedigree

- SIRE: WINSTAR GREYCUP-ET
- DAM: BOMAZ SHELDON 708-ET
- MGS: DENOVO 2981 SHELDON-ET
- MGD: BOMAZ MEDLEY 8075-ET
- MGGS: ABS MEDLEY-ET

Real World Data

TransitionRight® ★★★★★

Bull Fertility Conv

| | |
|-----------------|----------------|
| Reg. Number | 003245608803 |
| Reg. Name | BOMAZ GIZMO-ET |
| Registry Status | 99%-I |
| Date of Birth | 2022-03-21 |
| EFI | 10.5% |
| aAa | |
| DMS | |
| Kappa Casein | BE |
| Beta Casein | A1/A1 |
| CDCB | 12/2023 |
| Controller | ABS Global |

| Conformation | Dtrs: 0 Herds: 0 PTAT Rel: 78% | | | | |
|--------------|--------------------------------|----|---|---|----------------|
| | -2 | -1 | 0 | 1 | 2 |
| PTAT | | | | | 0.98 |
| UDC | | | | | 1.29 |
| FLC | | | | | 0.58 |
| BWC | | | | | -0.21 |
| ST | | | | | 0.38 Tall |
| SG | | | | | -0.03 Frail |
| BD | | | | | -0.19 Shallow |
| DF | | | | | 0.73 Open |
| RA | | | | | 0.03 Sloped |
| TW | | | | | 0.47 Wide |
| RLSV | | | | | -1.06 Straight |
| RLRV | | | | | 0.46 Straight |
| FA | | | | | 1.21 Steep |
| FLS | | | | | 0.65 High |
| FUA | | | | | 1.78 Strong |
| UH | | | | | 1.36 High |
| UW | | | | | 1.54 Wide |
| UC | | | | | 0.36 Strong |
| UD | | | | | 1.30 Shallow |
| FTP | | | | | 0.14 Close |
| RTP | | | | | 0.36 Close |
| TL | | | | | 0.35 Long |





DAM: Bomaz Sassafras 8791-ET VG-87

NM\$: +1179

TPI®: +3047

| Production | Dtrs: 0 Herds: 0 | |
|------------|------------------|---------|
| Milk | +987 Lbs | 82% Rel |
| Pro | +59 Lbs | +0.10% |
| Fat | +129 Lbs | +0.31% |
| FS | +384 Lbs | |
| CM\$ | +1195 | |
| GM\$ | +1154 | |
| FM\$ | +1041 | |

| Health & Fertility | | |
|--------------------|------|---------|
| PL | +4.9 | 76% Rel |
| LIV | +2.2 | 73% Rel |
| DPR | -0.6 | 75% Rel |
| SCS | 2.98 | 78% Rel |
| HCR | -0.3 | 73% Rel |
| CCR | +0.2 | 75% Rel |
| CDN MSP | 106 | |
| CDN MT | 98 | |
| AHI | 107 | |

Recessives HH1T, HH2T, HH3T, HH4T, HH5T, HH6T, MWT, TC, TD, TL, TN, TP, TR, TS, TV, TY

| Calving Traits | | | |
|----------------|------|---------|--------|
| SCE | 2.1% | 73% Rel | 17 Obs |
| DCE | 1.7% | 71% Rel | 0 Obs |
| SSB | 5.3% | 65% Rel | 17 Obs |
| DSB | 4.5% | 65% Rel | 0 Obs |

Pedigree

- SIRE: DENOVO 16429 HERCULES-ET
- DAM: BOMAZ SASSAFRAS 8791-ET
- MGS: ABS SASSAFRAS-ET
- MGD: BOMAZ TOPSHOT 277-ET
- MGGS: BOMAZ ALTATOPSHOT-ET

Real World Data

TransitionRight® ★★★★★

Bull Fertility Conv

| | |
|-----------------|------------------|
| Reg. Number | 003239712471 |
| Reg. Name | BOMAZ HEISMAN-ET |
| Registry Status | 99%-1 |
| Date of Birth | 2021-06-27 |
| EFI | 11.0% |
| aAa | 243 |
| DMS | |
| Kappa Casein | AB |
| Beta Casein | A2/A2 |
| CDCB | 12/2023 |
| Controller | ABS Global |

| Conformation | Dtrs: 0 Herds: 0 PTAT Rel: 79% | | | | | |
|--------------|--------------------------------|----|---|---|---|---------------|
| | -2 | -1 | 0 | 1 | 2 | |
| PTAT | | | | █ | | 1.15 |
| UDC | | | | █ | | 1.23 |
| FLC | | | | █ | | 0.30 |
| BWC | █ | | | | | -2.21 |
| ST | | | █ | | | -0.46 Short |
| SG | | █ | | | | -1.48 Frail |
| BD | | █ | | | | -0.81 Shallow |
| DF | | | | █ | | 1.82 Open |
| RA | | | | █ | | 0.42 Sloped |
| TW | | █ | | | | -0.71 Narrow |
| RLSV | | | | █ | | 1.28 Curved |
| RLRV | | | █ | | | -0.35 Hock-In |
| FA | | █ | | | | -0.62 Low |
| FLS | | | | █ | | 0.44 High |
| FUA | | | | █ | | 0.89 Strong |
| UH | | | | █ | | 1.80 High |
| UW | | | | █ | | 1.47 Wide |
| UC | | | | █ | | 0.21 Strong |
| UD | | | | █ | | 0.61 Shallow |
| FTP | | | | █ | | 0.58 Close |
| RTP | | | | █ | | 0.76 Close |
| TL | | █ | | | | -1.14 Short |





4TH DAM: Sandy - Valley Robust Ruby-ET EX-90

NM\$: +1002

TPI®: +2990

| Production | | Dtrs: 0 | Herds: 0 |
|------------|-----------|---------|----------|
| Milk | +1044 Lbs | 81% Rel | |
| Pro | +58 Lbs | +0.09% | |
| Fat | +120 Lbs | +0.27% | |
| FS | +143 Lbs | | |
| CM\$ | +1023 | | |
| GM\$ | +931 | | |
| FM\$ | +869 | | |

| Health & Fertility | | |
|--------------------|------|---------|
| PL | +3.7 | 75% Rel |
| LIV | +0.5 | 72% Rel |
| DPR | -2.5 | 75% Rel |
| SCS | 2.73 | 77% Rel |
| HCR | 0.0 | 74% Rel |
| CCR | -1.1 | 75% Rel |
| CDN MSP | 95 | |
| CDN MT | 101 | |
| AHI | 99 | |

Recessives HH1T, HH2T, HH3T, HH4T, HH5T, HH6T, MWT, TC, TD, TL, TN, TP, TR, TS, TV, TY

| Calving Traits | | | |
|----------------|------|---------|--------|
| SCE | 2.2% | 72% Rel | 19 Obs |
| DCE | 2.5% | 71% Rel | 0 Obs |
| SSB | 5.5% | 64% Rel | 19 Obs |
| DSB | 5.2% | 64% Rel | 0 Obs |

Pedigree

- SIRE: DENOVO 16311 IMPERIAL-ET
- DAM: DENOVO ENTITY 633-ET
- MGS: DENOVO 8084 ENTITY-ET
- MGD: GENOSOURCE REMORSE 80110-ET
- MGGS: MELLARY JOSUPER FRAZZLED-ET

Real World Data

TransitionRight® ★★

Bull Fertility Conv

| | |
|-----------------|------------------------|
| Reg. Number | 003230985967 |
| Reg. Name | DENOVO 18032 INDEED-ET |
| Registry Status | 99%-I |
| Date of Birth | 2021-04-21 |
| EFI | 10.9% |
| aAa | 324 |
| DMS | |
| Kappa Casein | AB |
| Beta Casein | A2/A2 |
| CDCB | 1 2/2023 |
| Controller | ABS Global |

| Conformation | Dtrs: 0 | | | | | Herds: 0 | PTAT Rel: 79% |
|--------------|---------|----|---|---|---|----------|-----------------|
| | -2 | -1 | 0 | 1 | 2 | | |
| PTAT | | | | | | | 1.89 |
| UDC | | | | | | | 1.74 |
| FLC | | | | | | | 0.38 |
| BWC | | | | | | | 0.12 |
| ST | | | | | | | 0.54 Tall |
| SG | | | | | | | 0.60 Strong |
| BD | | | | | | | 0.63 Deep |
| DF | | | | | | | 1.29 Open |
| RA | | | | | | | -1.90 High Pins |
| TW | | | | | | | 0.68 Wide |
| RLSV | | | | | | | 0.36 Curved |
| RLRV | | | | | | | 0.48 Straight |
| FA | | | | | | | 0.70 Steep |
| FLS | | | | | | | 0.45 High |
| FUA | | | | | | | 2.08 Strong |
| UH | | | | | | | 2.01 High |
| UW | | | | | | | 2.35 Wide |
| UC | | | | | | | 1.01 Strong |
| UD | | | | | | | 1.11 Shallow |
| FTP | | | | | | | 1.01 Close |
| RTP | | | | | | | 1.32 Close |
| TL | | | | | | | -0.43 Short |



MGD: Sandy-Valley No Limit-ET VG-85

NM\$: +729

TPI®: +2731

Production Dtrs: 251 Herds: 46

| | | |
|------|-----------|---------|
| Milk | +1085 Lbs | 95% Rel |
| Pro | +62 Lbs | +0.10% |
| Fat | +72 Lbs | +0.10% |
| FS | -27 Lbs | |
| CM\$ | +774 | |
| GM\$ | +654 | |
| FM\$ | +594 | |

Health & Fertility

| | | |
|---------|------|---------|
| PL | +3.2 | 85% Rel |
| LIV | +0.1 | 79% Rel |
| DPR | -2.0 | 83% Rel |
| SCS | 3.07 | 92% Rel |
| HCR | -0.7 | 91% Rel |
| CCR | -0.9 | 83% Rel |
| CDN MSP | 102 | |
| CDN MT | 105 | |
| AHI | 89 | |

Recessives HH1T, HH2T, HH3T, HH4T, HH5T, HH6T, MWT, TC, TD, TL, TN, TP, TR, TS, TV, TY

Calving Traits

| | | | |
|-----|------|----------|----------|
| SCE | 1.8% | 97 % Rel | 1744 Obs |
| DCE | 2.2% | 74 % Rel | 93 Obs |
| SSB | 4.8% | 92 % Rel | 1295 Obs |
| DSB | 4.6% | 67 % Rel | 47 Obs |

Pedigree

- SIRE: DE-SU 14222 KENOBI-ET
- DAM: PINE-TREE 5976 PROP 7829-ET
- MGS: PINE-TREE PROPHECY-ET
- MGD: SANDY-VALLEY NO LIMIT-ET
- MGGS: MR MOGUL DELTA 1427-ET

Real World Data

TransitionRight® ★

Bull Fertility Conv ★★★★★

2978 Obs

| | |
|-----------------|--------------------|
| Reg. Number | 003150687414 |
| Reg. Name | PINE-TREE KASHI-ET |
| Registry Status | 99%-1 |
| Date of Birth | 2019-05-28 |
| EFI | 11.4% |
| aAa | 456 |
| DMS | |
| Kappa Casein | BB |
| Beta Casein | A2/A2 |
| CDCB | 12/2023 |
| Controller | ABS Global |

Conformation Dtrs: 62 Herds: 10 PTAT Rel: 89%

| | -2 | -1 | 0 | 1 | 2 | |
|------|----|-------|-------|-------|---|------------------------|
| PTAT | | | | [Bar] | | 1.59 |
| UDC | | | | [Bar] | | 1.74 |
| FLC | | | [Bar] | | | -0.13 |
| BWC | | | | [Bar] | | 0.64 |
| ST | | | | [Bar] | | 0.99 Tall |
| SG | | | | [Bar] | | 0.90 Strong |
| BD | | | | [Bar] | | 0.96 Deep |
| DF | | | | [Bar] | | 1.11 Open |
| RA | | [Bar] | | | | -0.70 High Pins |
| TW | | | | [Bar] | | 1.23 Wide |
| RLSV | | [Bar] | | | | -0.64 Straight |
| RLRV | | | [Bar] | | | -0.23 Hock-In |
| FA | | | | [Bar] | | 0.87 Steep |
| FLS | | | | [Bar] | | 0.14 High |
| FUA | | | | [Bar] | | 1.85 Strong |
| UH | | | | [Bar] | | 2.60 High |
| UW | | | | [Bar] | | 2.09 Wide |
| UC | | | | [Bar] | | 0.92 Strong |
| UD | | | | [Bar] | | 1.76 Shallow |
| FTP | | | | [Bar] | | 0.11 Close |
| RTP | | | | [Bar] | | 0.46 Close |
| TL | | | | [Bar] | | 0.83 Long |



BULL: 29H018747 Denovo 14242 KOKOMO-ET

NM\$: +627

TPI®: +2693

Production Dtrs: 3161 Herds: 755

| | | |
|------|-----------|---------|
| Milk | +1333 Lbs | 98% Rel |
| Pro | +38 Lbs | -0.01% |
| Fat | +47 Lbs | -0.01% |
| FS | -25 Lbs | |
| CM\$ | +631 | |
| GM\$ | +626 | |
| FM\$ | +627 | |

Health & Fertility

| | | |
|---------|------|---------|
| PL | +4.3 | 94% Rel |
| LIV | +0.5 | 83% Rel |
| DPR | +1.6 | 93% Rel |
| SCS | 2.72 | 97% Rel |
| HCR | +1.0 | 89% Rel |
| CCR | +2.8 | 92% Rel |
| CDN MSP | 104 | |
| CDN MT | 102 | |
| AHI | 101 | |

Recessives HH1T, HH2T, HH3T, HH4T, HH5T, HH6T, MWT, TC, TD, TL, TN, TP, TS, TV, TY

Calving Traits

| | | | |
|-----|------|---------|---------|
| SCE | 2.2% | 95% Rel | 784 Obs |
| DCE | 2.5% | 88% Rel | 243 Obs |
| SSB | 5.5% | 89% Rel | 663 Obs |
| DSB | 5.2% | 88% Rel | 182 Obs |

Pedigree

- SIRE: SYRYCZUK SILVR BLOWTORCH-ET
- DAM: DE-SU DELTA 4900-ET
- MGS: MR MOGUL DELTA 1427-ET
- MGD: DE-SU SUPERSIRE 3349-ET
- MGGS: SEAGULL-BAY SUPERSIRE-ET

Real World Data

TransitionRight® ★★★★★

Bull Fertility Conv ★★★★★

515 Obs

| | |
|-----------------|------------------------|
| Reg. Number | 003141559636 |
| Reg. Name | DENOVO 14242 KOKOMO-ET |
| Registry Status | 99%-I |
| Date of Birth | 2017-05-31 |
| EFI | 10.7% |
| aAa | |
| DMS | |
| Kappa Casein | AA |
| Beta Casein | A1/A2 |
| CDCB | 1 2/2023 |
| Controller | ABS Global |

| Conformation | Dtrs: 916 Herds: 253 PTAT Rel: 96% | | | | | |
|--------------|------------------------------------|----|---|---|---|-----------------|
| | -2 | -1 | 0 | 1 | 2 | |
| PTAT | | | | █ | | 1.58 |
| UDC | | | | █ | | 1.49 |
| FLC | | | | █ | | 0.90 |
| BWC | | | | █ | | 0.55 |
| ST | | | | █ | | 1.42 Tall |
| SG | | | | █ | | 0.82 Strong |
| BD | | | | █ | | 0.55 Deep |
| DF | | | | █ | | 0.55 Open |
| RA | | | █ | | | -0.51 High Pins |
| TW | | █ | | | | -0.87 Narrow |
| RLSV | | █ | | | | -0.46 Straight |
| RLRV | | | | █ | | 1.22 Straight |
| FA | | | | █ | | 1.73 Steep |
| FLS | | | | █ | | 1.07 High |
| FUA | | | | █ | | 1.82 Strong |
| UH | | | | █ | | 2.21 High |
| UW | | | | █ | | 1.88 Wide |
| UC | | | | █ | | 0.68 Strong |
| UD | | | | █ | | 1.72 Shallow |
| FTP | | | | █ | | 0.96 Close |
| RTP | | | | █ | | 0.91 Close |
| TL | | █ | | | | -1.21 Short |



MGD: Winstar Crimson 5742-ET VG-85

NM\$: +1144

TPI®: +2965

Production **Dtrs: 0 Herds: 0**

| | | |
|------|----------|---------|
| Milk | +942 Lbs | 79% Rel |
| Pro | +54 Lbs | +0.09% |
| Fat | +123 Lbs | +0.30% |
| FS | +214 Lbs | |
| CM\$ | +1163 | |
| GM\$ | +1063 | |
| FM\$ | +1015 | |

Health & Fertility

| | | |
|---------|------|---------|
| PL | +6.3 | 74% Rel |
| LIV | +3.4 | 71% Rel |
| DPR | -1.1 | 74% Rel |
| SCS | 2.74 | 75% Rel |
| HCR | +1.8 | 71% Rel |
| CCR | +0.2 | 73% Rel |
| CDN MSP | 103 | |
| CDN MT | 101 | |
| AHI | 108 | |

Recessives HH1T, HH2T, HH3T, HH4T, HH5T, HH6T, MWT, TC, TD, TL, TN, TP, TR, TV, TY

Calving Traits

| | | | |
|-----|------|----------|-------|
| SCE | 2.2% | 61 % Rel | 0 Obs |
| DCE | 2.4% | 57 % Rel | 0 Obs |
| SSB | 6.0% | 55 % Rel | 0 Obs |
| DSB | 3.9% | 55 % Rel | 0 Obs |

Pedigree

- SIRE: WINSTAR MEDIA-ET
- DAM: WINSTAR ACURA 7357-ET
- MGS: PINE-TREE ACURA-ET
- MGD: WINSTAR CRIMSON 5742-ET
- MGGS: ABS CRIMSON-ET

Real World Data

TransitionRight® ★★ ★

Bull Fertility Conv

| | |
|-----------------|------------------------|
| Reg. Number | 003234522361 |
| Reg. Name | DENOVO 2361 MAGICAL-ET |
| Registry Status | 99%-1 |
| Date of Birth | 2022-07-20 |
| EFI | 10.4% |
| aAa | 342 |
| DMS | |
| Kappa Casein | AA |
| Beta Casein | A2/A2 |
| CDCB | 12/2023 |
| Controller | ABS Global |

| Conformation | Dtrs: 0 Herds: 0 PTAT Rel: 78% | | | | | |
|--------------|--------------------------------|----|---|---|---|------------------------|
| | -2 | -1 | 0 | 1 | 2 | |
| PTAT | | | ■ | | | 0.20 |
| UDC | | | ■ | | | 0.45 |
| FLC | | | ■ | | | 0.12 |
| BWC | | | ■ | | | -0.35 |
| ST | | | ■ | | | -0.47 Short |
| SG | | | ■ | | | 0.05 Strong |
| BD | | | ■ | | | -0.13 Shallow |
| DF | | | ■ | | | 0.41 Open |
| RA | | ■ | | | | -0.91 High Pins |
| TW | | ■ | | | | -0.45 Narrow |
| RLSV | | | ■ | | | 0.48 Curved |
| RLRV | | | ■ | | | 0.22 Straight |
| FA | | | ■ | | | -0.38 Low |
| FLS | | | ■ | | | -0.01 Low |
| FUA | | | ■ | | | 0.54 Strong |
| UH | | | ■ | | | 0.40 High |
| UW | | | ■ | | | 0.95 Wide |
| UC | | | ■ | | | -0.24 Weak |
| UD | | | ■ | | | -0.20 Deep |
| FTP | | | ■ | | | 0.16 Close |
| RTP | | | ■ | | | -0.18 Close |
| TL | | | ■ | | | -0.14 Short |

MASERATI-P

29H020542 | WINSTAR MASERATI-P-ET



DAM: Winstar Adrenaline-ET GP-83

NM\$: +1084

TPI®: +2928

| Production | Dtrs: 3161 | Herds: 755 |
|------------|------------|------------|
| Milk | +469 Lbs | 82% Rel |
| Pro | +39 Lbs | -0.09% |
| Fat | +119 Lbs | -0.35% |
| FS | +162 Lbs | |
| CM\$ | +1104 | |
| GM\$ | +1043 | |
| FM\$ | +958 | |

| Health & Fertility | | |
|--------------------|------|---------|
| PL | +6.6 | 76% Rel |
| LIV | +3.7 | 73% Rel |
| DPR | +0.7 | 76% Rel |
| SCS | 2.70 | 78% Rel |
| HCR | +1.3 | 73% Rel |
| CCR | +2.6 | 75% Rel |
| CDN MSP | 99 | |
| CDN MT | 98 | |
| AHI | 102 | |

Recessives HH1T, HH2T, HH3T, HH4T, HH5T, HH6T, MWT, PC, TC, TD, TL, TN, TR, TS, TV, TY

| Calving Traits | | | |
|----------------|------|---------|---------|
| SCE | 1.7% | 88% Rel | 245 Obs |
| DCE | 1.9% | 70% Rel | 0 Obs |
| SSB | 5.2% | 80% Rel | 224 Obs |
| DSB | 4.1% | 64% Rel | 0 Obs |

Pedigree

- SIRE: WINSTAR MENDEL-P-ET
- DAM: WINSTAR ADRENALINE-ET
- MGS: ABS CRIMSON-ET
- MGD: SEAGULL-BAY AZERI-ET
- MGGS: ABS ACHIEVER-ET

Real World Data

TransitionRight® ★★★★★

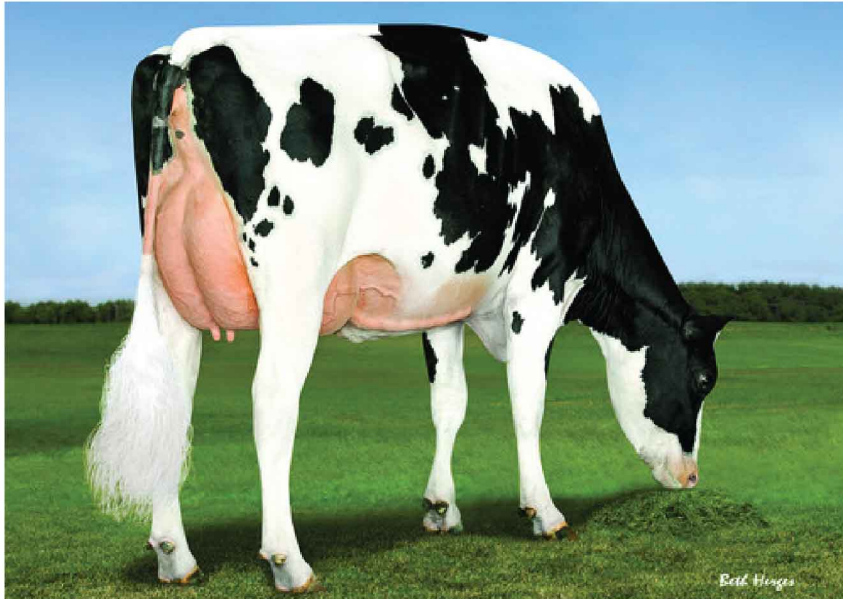
Bull Fertility Conv ★★

1377 Obs

| | |
|-----------------|-----------------------|
| Reg. Number | 003224809740 |
| Reg. Name | WINSTAR MASERATI-P-ET |
| Registry Status | 99%-I |
| Date of Birth | 2021-02-24 |
| EFI | 10.2% |
| aAa | 432 |
| DMS | |
| Kappa Casein | AB |
| Beta Casein | A2/A2 |
| CDCB | 1 2/2023 |
| Controller | ABS Global |

| Conformation | Dtrs: 0 | | | | | Herds: 0 | | | | | PTAT Rel: 96% |
|--------------|---------|----|---|---|---|----------|--|--|--|--|-----------------|
| | -2 | -1 | 0 | 1 | 2 | | | | | | |
| PTAT | | | | | | | | | | | 0.23 |
| UDC | | | | | | | | | | | 0.57 |
| FLC | | | | | | | | | | | -0.28 |
| BWC | | | | | | | | | | | -1.26 |
| ST | | | | | | | | | | | -0.41 Short |
| SG | | | | | | | | | | | -0.82 Frail |
| BD | | | | | | | | | | | -0.71 Shallow |
| DF | | | | | | | | | | | 0.86 Open |
| RA | | | | | | | | | | | -0.11 High Pins |
| TW | | | | | | | | | | | -0.67 Narrow |
| RLSV | | | | | | | | | | | 0.59 Curved |
| RLRV | | | | | | | | | | | -0.66 Hock-In |
| FA | | | | | | | | | | | -0.45 Low |
| FLS | | | | | | | | | | | -0.23 Low |
| FUA | | | | | | | | | | | 0.45 Strong |
| UH | | | | | | | | | | | 0.60 High |
| UW | | | | | | | | | | | 0.87 Wide |
| UC | | | | | | | | | | | -0.12 Weak |
| UD | | | | | | | | | | | 0.40 Shallow |
| FTP | | | | | | | | | | | 0.23 Close |
| RTP | | | | | | | | | | | 0.31 Close |
| TL | | | | | | | | | | | -1.12 Short |





FULL SISTER TO 3RD DAM: ABS 7484 Anna-ET VG-85

NM\$: +1065

TPI®: +2952

Production **Dtrs: 0 Herds: 0**

| | | |
|------|-----------|---------|
| Milk | +1062 Lbs | 79% Rel |
| Pro | +50 Lbs | +0.06% |
| Fat | +99 Lbs | +0.20% |
| FS | +335 Lbs | |
| CM\$ | +1077 | |
| GM\$ | +1040 | |
| FM\$ | +977 | |

Health & Fertility

| | | |
|---------|------|---------|
| PL | +5.8 | 74% Rel |
| LIV | +3.1 | 71% Rel |
| DPR | +0.3 | 74% Rel |
| SCS | 2.91 | 75% Rel |
| HCR | +3.1 | 72% Rel |
| CCR | +1.9 | 74% Rel |
| CDN MSP | 112 | |
| CDN MT | 102 | |
| AHI | 98 | |

Recessives HH1T, HH2T, HH3T, HH4T, HH5T, HH6T, MWT, TC, TD, TL, TN, TP, TR, TS, TV, TY

Calving Traits

| | | | |
|-----|------|---------|-------|
| SCE | 2.0% | 62% Rel | 0 Obs |
| DCE | 2.5% | 56% Rel | 0 Obs |
| SSB | 4.5% | 58% Rel | 0 Obs |
| DSB | 4.8% | 54% Rel | 0 Obs |

Pedigree

- SIRE: BOMAZ MEMORIAL-P-ET
- DAM: DENOVO RUBICAL 1799-ET
- MGS: GENOSOURCE RUBICAL-ET
- MGD: DENOVO KINGSTON 9292-ET
- MGGS: WELCOME KINGSTON-ET

Real World Data

TransitionRight® ★★★

Bull Fertility Conv

| | |
|-----------------|--------------------------|
| Reg. Number | 003234523320 |
| Reg. Name | DENOVO 6869 MILLCREEK-ET |
| Registry Status | 99%-1 |
| Date of Birth | 2022-03-12 |
| EFI | 10.3% |
| aAa | 423 |
| DMS | |
| Kappa Casein | BE |
| Beta Casein | A1/A2 |
| CDCB | 12/2023 |
| Controller | ABS Global |

| Conformation | Dtrs: 0 Herds: 0 PTAT Rel: 77% | | | | | |
|--------------|--------------------------------|-------|-------|-------|---|-----------------|
| | -2 | -1 | 0 | 1 | 2 | |
| PTAT | | | | [Bar] | | 1.22 |
| UDC | | | | [Bar] | | 1.30 |
| FLC | | | [Bar] | | | 0.08 |
| BWC | | [Bar] | | | | -1.16 |
| ST | | | [Bar] | | | 0.35 Tall |
| SG | | [Bar] | | | | -0.66 Frail |
| BD | | | [Bar] | | | -0.31 Shallow |
| DF | | | | [Bar] | | 1.54 Open |
| RA | | | [Bar] | | | -0.10 High Pins |
| TW | | | [Bar] | | | -0.11 Narrow |
| RLSV | | | | [Bar] | | 1.77 Curved |
| RLRV | | | [Bar] | | | -0.17 Hock-In |
| FA | | | [Bar] | | | -0.14 Low |
| FLS | | | [Bar] | | | 0.34 High |
| FUA | | | | [Bar] | | 1.30 Strong |
| UH | | | | [Bar] | | 1.22 High |
| UW | | | | [Bar] | | 1.92 Wide |
| UC | | | | [Bar] | | 1.39 Strong |
| UD | | | | [Bar] | | 0.99 Shallow |
| FTP | | | | [Bar] | | 1.95 Close |
| RTP | | | | [Bar] | | 1.87 Close |
| TL | | [Bar] | | | | -1.53 Short |





DAM: Bomaz Kenobi 8852-ET GP-84

NM\$: +1074

TPI®: +2928

| Production | Dtrs: 0 Herds: 0 | |
|------------|------------------|---------|
| Milk | +596 Lbs | 82% Rel |
| Pro | +49 Lbs | +0.11% |
| Fat | +136 Lbs | +0.40% |
| FS | +135 Lbs | |
| CM\$ | +1094 | |
| GM\$ | +987 | |
| FM\$ | +923 | |

| Health & Fertility | | |
|--------------------|------|---------|
| PL | +4.6 | 76% Rel |
| LIV | +3.5 | 73% Rel |
| DPR | -2.2 | 76% Rel |
| SCS | 2.84 | 78% Rel |
| HCR | -1.5 | 73% Rel |
| CCR | -1.3 | 75% Rel |
| CDN MSP | 95 | |
| CDN MT | 97 | |
| AHI | 99 | |

Recessives HH1T, HH2T, HH3T, HH4T, HH5T, HH6T, MWT, TC, TD, TL, TN, TP, TR, TS, TV, TY

| Calving Traits | | | |
|----------------|------|---------|-------|
| SCE | 1.6% | 63% Rel | 0 Obs |
| DCE | 1.9% | 62% Rel | 0 Obs |
| SSB | 4.9% | 60% Rel | 0 Obs |
| DSB | 4.2% | 60% Rel | 0 Obs |

Pedigree

- SIRE: WINSTAR MENDEL-P-ET
- DAM: BOMAZ KENOBI 8852-ET
- MGS: DE-SU 14222 KENOBI-ET
- MGD: BOMAZ TOPSHOP 7892-ET
- MGGS: BOMAZ ALTATOPSHOT-ET

Real World Data

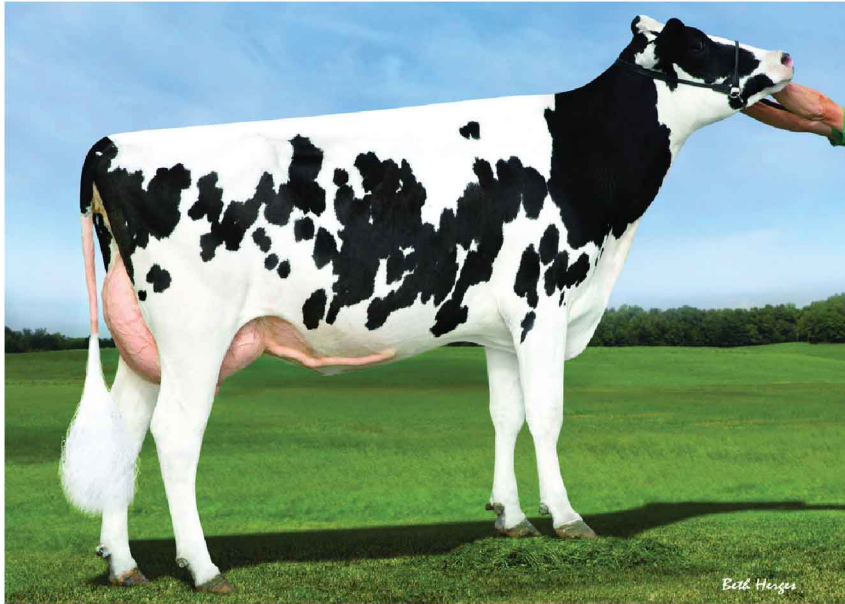
TransitionRight® ★★

Bull Fertility Conv

| | |
|-----------------|-----------------|
| Reg. Number | 003234463461 |
| Reg. Name | BOMAZ MULTITUDE |
| Registry Status | 99%-I |
| Date of Birth | 2021-04-09 |
| EFI | 10.3% |
| aAa | 315 |
| DMS | |
| Kappa Casein | AB |
| Beta Casein | A2/A2 |
| CDCB | 1 2/2023 |
| Controller | ABS Global |

| Conformation | Dtrs: 0 Herds: 0 PTAT Rel: 79% | | | | | |
|--------------|--------------------------------|----|---|---|---|-----------------|
| | -2 | -1 | 0 | 1 | 2 | |
| PTAT | | | ■ | | | 0.24 |
| UDC | | | ■ | | | 0.66 |
| FLC | | | ■ | | | 0.32 |
| BWC | | ■ | | | | -1.44 |
| ST | | ■ | | | | -1.45 Short |
| SG | | ■ | | | | -0.97 Frail |
| BD | | ■ | | | | -0.97 Shallow |
| DF | | | ■ | | | 0.48 Open |
| RA | | | ■ | | | -0.52 High Pins |
| TW | | | ■ | | | -0.63 Narrow |
| RLSV | | | ■ | | | -0.21 Straight |
| RLRV | | | ■ | | | -0.18 Hock-In |
| FA | | | ■ | | | -0.32 Low |
| FLS | | | ■ | | | -0.06 High |
| FUA | | | ■ | | | 0.01 Strong |
| UH | | | ■ | | | 0.66 High |
| UW | | | ■ | | | 0.96 Wide |
| UC | | | ■ | | | 0.44 Strong |
| UD | | | ■ | | | -0.62 Deep |
| FTP | | | ■ | | | 0.77 Close |
| RTP | | | ■ | | | 1.18 Close |
| TL | | | ■ | | | -0.73 Short |





4TH DAM: S-S-I Moonry Myesha 9071-ET VG-85

NM\$: +839

TPI®: +2746

| Production | Dtrs: 0 Herds: 0 | |
|------------|------------------|---------|
| Milk | +1135 Lbs | 81% Rel |
| Pro | +45 Lbs | +0.03% |
| Fat | +86 Lbs | +0.15% |
| FS | +145 Lbs | |
| CM\$ | +847 | |
| GM\$ | +786 | |
| FM\$ | +786 | |

| Health & Fertility | | |
|--------------------|------|---------|
| PL | +4.4 | 76% Rel |
| LIV | +1.3 | 72% Rel |
| DPR | -0.9 | 76% Rel |
| SCS | 2.92 | 78% Rel |
| HCR | +2.7 | 74% Rel |
| CCR | +0.6 | 75% Rel |
| CDN MSP | 102 | |
| CDN MT | 101 | |
| AHI | 99 | |

Recessives HH1T, HH2T, HH3T, HH4T, HH5T, HH6T, MWT, PC, TC, TD, TL, TN, TP, TR, TS, TV, TY

| Calving Traits | | | |
|----------------|------|---------|---------|
| SCE | 2.1% | 91% Rel | 418 Obs |
| DCE | 2.5% | 70% Rel | 0 Obs |
| SSB | 5.4% | 83% Rel | 384 Obs |
| DSB | 4.2% | 65% Rel | 0 Obs |

Pedigree

- SIRE: WINSTAR EDGE-P-ET
- DAM: WINSTAR JOSUPER 5713-ET
- MGS: UECKER SUPERSIRE JOSUPER-ET
- MGD: WINSTAR FRAZZ 4373-ET
- MGGS: MELARRY JOSUPER FRAZZLED-ET

Real World Data

TransitionRight® ★★
 Bull Fertility Conv ★★★★★
 2579 Obs

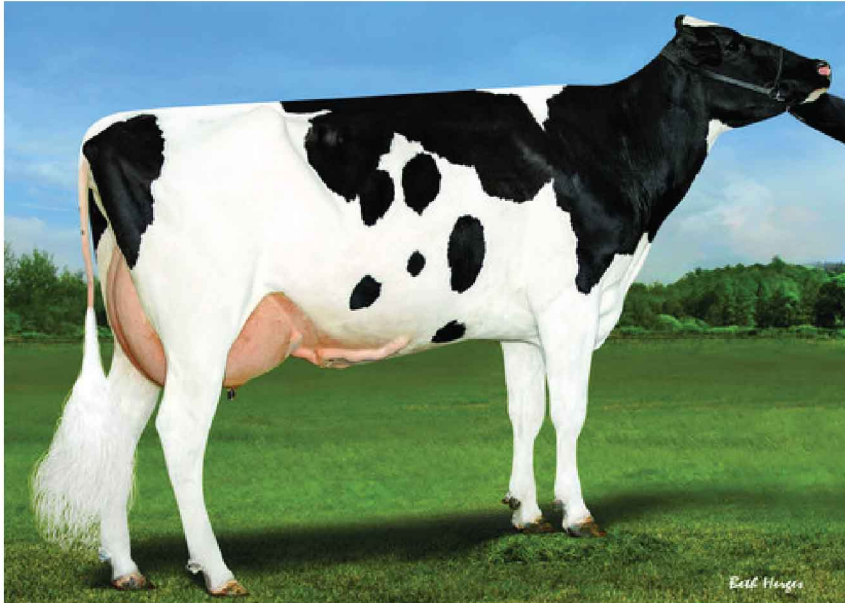
| | |
|-----------------|--------------------|
| Reg. Number | 003214292592 |
| Reg. Name | WINSTAR OGDEN-P-ET |
| Registry Status | 99%-I |
| Date of Birth | 2020-10-01 |
| EFI | 11.0% |
| aAa | |
| DMS | |
| Kappa Casein | AA |
| Beta Casein | A2/A2 |
| CDCB | 12/2023 |
| Controller | ABS Global |

| Conformation | Dtrs: 0 Herds: 0 PTAT Rel: 80% | | | | | |
|--------------|--------------------------------|----|---|---|---|-----------------|
| | -2 | -1 | 0 | 1 | 2 | |
| PTAT | | | | | | 0.72 |
| UDC | | | | | | 0.78 |
| FLC | | | | | | 0.10 |
| BWC | | | | | | -0.57 |
| ST | | | | | | -0.49 Short |
| SG | | | | | | -0.13 Frail |
| BD | | | | | | -0.13 Shallow |
| DF | | | | | | 0.80 Open |
| RA | | | | | | -0.88 High Pins |
| TW | | | | | | 0.12 Wide |
| RLSV | | | | | | 0.25 Curved |
| RLRV | | | | | | -0.02 Hock-In |
| FA | | | | | | -0.02 Low |
| FLS | | | | | | 0.00 High |
| FUA | | | | | | 0.45 Strong |
| UH | | | | | | 1.20 High |
| UW | | | | | | 1.77 Wide |
| UC | | | | | | 0.03 Strong |
| UD | | | | | | -0.29 Deep |
| FTP | | | | | | -0.26 Wide |
| RTP | | | | | | -0.04 Wide |
| TL | | | | | | 0.72 Long |



PANCHITO

29H020726 | BOMAZ PANCHITO-ET



DAM: Bomaz Entity 80648-ET VG-85

NM\$: +1062

TPI®: +2921

| Production | Dtrs: 0 | Herds: 0 |
|------------|----------|----------|
| Milk | +762 Lbs | 82% Rel |
| Pro | +59 Lbs | +0.12% |
| Fat | +117 Lbs | +0.30% |
| FS | +260 Lbs | |
| CM\$ | +1083 | |
| GM\$ | +1002 | |
| FM\$ | +890 | |

| Health & Fertility | | |
|--------------------|------|---------|
| PL | +4.6 | 75% Rel |
| LIV | +2.1 | 72% Rel |
| DPR | -1.5 | 75% Rel |
| SCS | 2.93 | 78% Rel |
| HCR | +0.1 | 73% Rel |
| CCR | -0.3 | 75% Rel |
| CDN MSP | 101 | |
| CDN MT | 97 | |
| AHI | 105 | |

Recessives HH1T, HH2T, HH3T, HH4T, HH5T, HH6T, MWT, TC, TD, TL, TN, TP, TR, TS, TV, TY

| Calving Traits | | | |
|----------------|------|---------|-------|
| SCE | 2.2% | 63% Rel | 0 Obs |
| DCE | 1.9% | 60% Rel | 0 Obs |
| SSB | 4.9% | 60% Rel | 0 Obs |
| DSB | 4.3% | 59% Rel | 0 Obs |

Pedigree

- SIRE: DENOVO 16429 HERCULES-ET
- DAM: BOMAZ ENTITY 80648-ET
- MGS: DENOVO 8084 ENTITY-ET
- MGD: BOMAZ ROBSON 49-ET
- MGGS: BOMAZ ALTAROBSON-ET

Real World Data

TransitionRight® ★★★

Bull Fertility Conv

| | |
|-----------------|-------------------|
| Reg. Number | 003238422860 |
| Reg. Name | BOMAZ PANCHITO-ET |
| Registry Status | 99%-I |
| Date of Birth | 2021-06-27 |
| EFI | 10.8% |
| aAa | 324 |
| DMS | |
| Kappa Casein | BB |
| Beta Casein | A2/A2 |
| CDCB | 1 2/2023 |
| Controller | ABS Global |

| Conformation | Dtrs: 0 | | | | | Herds: 0 | PTAT Rel: 79% |
|--------------|---------|----|---|---|---|----------|---------------|
| | -2 | -1 | 0 | 1 | 2 | | |
| PTAT | | | | █ | | | 0.64 |
| UDC | | | | █ | | | 0.70 |
| FLC | | | | █ | | | 0.35 |
| BWC | | █ | | | | | -0.81 |
| ST | | | | █ | | | 0.43 Tall |
| SG | | | █ | | | | -0.35 Frail |
| BD | | | | | | | -0.01 Shallow |
| DF | | | | █ | █ | | 1.58 Open |
| RA | | | | █ | | | 0.20 Sloped |
| TW | | | | █ | | | 0.51 Wide |
| RLSV | | | | █ | █ | | 1.19 Curved |
| RLRV | | | | █ | | | 0.31 Straight |
| FA | | | | | | | -0.16 Low |
| FLS | | | | █ | | | 0.53 High |
| FUA | | | | █ | | | 0.35 Strong |
| UH | | | | █ | █ | | 1.11 High |
| UW | | | | █ | █ | | 1.39 Wide |
| UC | | | | █ | █ | | 1.19 Strong |
| UD | | | | | | | -0.04 Deep |
| FTP | | | | █ | █ | | 1.65 Close |
| RTP | | | | █ | █ | | 2.37 Close |
| TL | | █ | | | | | -1.32 Short |



3RD DAM: Klassic Rbcn Bubblebath-ET VG-88

Pedigree

- SIRE: DENOVO 15492 HUGO-ET
- DAM: DENOVO JOSUPER 10191-ET
- MGS: UECKER SUPERSIRE JOSUPER-ET
- MGD: ABS SPECTRE 7734-ET
- MGGS: DE-SU 13050 SPECTRE-ET

Real World Data

TransitionRight® ★★★

Bull Fertility Conv

| | |
|-----------------|------------------------|
| Reg. Number | 003222038072 |
| Reg. Name | DENOVO 17785 PLOVER-ET |
| Registry Status | 99%-I |
| Date of Birth | 2020-10-26 |
| EFI | 10.7% |
| aAa | |
| DMS | |
| Kappa Casein | AB |
| Beta Casein | A2/A2 |
| CDCB | 12/2023 |
| Controller | ABS Global |

NM\$: +869

TPI®: +2817

Production

| | | Dtrs: 0 Herds: 0 |
|------|-----------|------------------|
| Milk | +2038 Lbs | 81% Rel |
| Pro | +66 Lbs | +0.01% |
| Fat | +82 Lbs | +0.01% |
| FS | +88 Lbs | |
| CM\$ | +875 | |
| GM\$ | +801 | |
| FM\$ | +840 | |

Health & Fertility

| | | |
|---------|------|---------|
| PL | +3.8 | 77% Rel |
| LIV | +0.5 | 72% Rel |
| DPR | -1.8 | 77% Rel |
| SCS | 2.81 | 78% Rel |
| HCR | -0.3 | 74% Rel |
| CCR | -0.9 | 76% Rel |
| CDN MSP | 100 | |
| CDN MT | 105 | |
| AHI | 97 | |

Recessives HH1T, HH2T, HH3T, HH4T, HH5T, HH6T, MWT, TC, TD, TL, TN, TP, TR, TS, TV, TY

Calving Traits

| | | | |
|-----|------|---------|-------|
| SCE | 2.1% | 63% Rel | 0 Obs |
| DCE | 1.8% | 60% Rel | 0 Obs |
| SSB | 5.8% | 59% Rel | 0 Obs |
| DSB | 4.2% | 58% Rel | 0 Obs |

| Conformation | Dtrs: 0 Herds: 0 PTAT Rel: 79% | | | | | |
|--------------|--------------------------------|----|---|---|---|-----------------|
| | -2 | -1 | 0 | 1 | 2 | |
| PTAT | | | | █ | | 1.03 |
| UDC | | | | █ | | 1.20 |
| FLC | | | █ | | | 0.14 |
| BWC | | | █ | | | -0.20 |
| ST | | | | █ | | 0.71 Tall |
| SG | | | █ | | | 0.13 Strong |
| BD | | | █ | | | 0.14 Deep |
| DF | | | | █ | | 1.09 Open |
| RA | | | █ | | | -0.36 High Pins |
| TW | | | █ | | | 0.25 Wide |
| RLSV | | | █ | | | -0.15 Straight |
| RLRV | | | █ | | | -0.15 Hock-In |
| FA | | | | █ | | 0.65 Steep |
| FLS | | | | █ | | 0.38 High |
| FUA | | | | █ | | 1.04 Strong |
| UH | | | | █ | | 2.38 High |
| UW | | | | █ | | 1.88 Wide |
| UC | | | █ | | | -0.05 Weak |
| UD | | | | █ | | 0.86 Shallow |
| FTP | | | █ | | | -0.68 Wide |
| RTP | | | █ | | | -0.33 Wide |
| TL | | | █ | | | 0.29 Long |





DAM: Har-Dale-Jp Yoder Party-Et VG-85

NM\$: +1073

TPI®: +2986

| Production | | Dtrs: 0 Herds: 0 |
|------------|----------|------------------|
| Milk | +793 Lbs | 82% Rel |
| Pro | +53 Lbs | +0.10% |
| Fat | +119 Lbs | +0.31% |
| FS | +235 Lbs | |
| CM\$ | +1091 | |
| GM\$ | +1060 | |
| FM\$ | +933 | |

| Health & Fertility | | |
|--------------------|------|---------|
| PL | +4.9 | 77% Rel |
| LIV | +1.2 | 73% Rel |
| DPR | +0.1 | 77% Rel |
| SCS | 2.89 | 79% Rel |
| HCR | +3.9 | 75% Rel |
| CCR | +2.2 | 76% Rel |
| CDN MSP | 102 | |
| CDN MT | 99 | |
| AHI | 97 | |

Recessives HH1T, HH2T, HH3T, HH4T, HH5T, HH6T, MWT, TC, TD, TL, TN, TP, TS, TV, TY

| Calving Traits | | | |
|----------------|------|---------|--------|
| SCE | 2.1% | 70% Rel | 16 Obs |
| DCE | 2.5% | 70% Rel | 0 Obs |
| SSB | 5.2% | 64% Rel | 16 Obs |
| DSB | 4.5% | 64% Rel | 0 Obs |

Pedigree

- SIRE: FB 7683 BILLY ALONSO-ET
- DAM: HAR-DALE-JP YODER PARTY-ET
- MGS: WOODCREST MOGUL YODER-ET
- MGD: HAR-DALE-ACRES-JP PRIDE-ET
- MGGS: ROYLANE SOCR A ROBUST-ET

Real World Data

TransitionRight® ★★★★★

Bull Fertility Conv ★★★★★

1310 Obs

| | |
|-----------------|------------------------|
| Reg. Number | 003127591386 |
| Reg. Name | DENOVO 3788 POLARIS-ET |
| Registry Status | 99%-I |
| Date of Birth | 2021-03-01 |
| EFI | 10.5% |
| aAa | |
| DMS | |
| Kappa Casein | AA |
| Beta Casein | A2/A2 |
| CDCB | 1 2/2023 |
| Controller | ABS Global |

| Conformation | Dtrs: 0 Herds: 0 PTAT Rel: 80% | | | | |
|--------------|--------------------------------|----|---|---|----------------|
| | -2 | -1 | 0 | 1 | 2 |
| PTAT | | | | | 0.69 |
| UDC | | | | | 1.00 |
| FLC | | | | | 0.51 |
| BWC | | | | | -0.85 |
| ST | | | | | 0.00 Tall |
| SG | | | | | -0.74 Frail |
| BD | | | | | -0.62 Shallow |
| DF | | | | | 0.50 Open |
| RA | | | | | 0.15 Sloped |
| TW | | | | | -0.18 Narrow |
| RLSV | | | | | -0.55 Straight |
| RLRV | | | | | 0.60 Straight |
| FA | | | | | 0.21 Steep |
| FLS | | | | | 0.47 High |
| FUA | | | | | 0.92 Strong |
| UH | | | | | 1.04 High |
| UW | | | | | 0.85 Wide |
| UC | | | | | 0.76 Strong |
| UD | | | | | 1.02 Shallow |
| FTP | | | | | 1.14 Close |
| RTP | | | | | 1.41 Close |
| TL | | | | | -0.69 Short |



DAM: Genosource Rdelta 32651-ET VG-87

NM\$: +924

TPI®: +2850

| Production | Dtrs: 1021 Herds: 186 | |
|------------|-----------------------|---------|
| Milk | +1087 Lbs | 98% Rel |
| Pro | +40 Lbs | +0.02% |
| Fat | +95 Lbs | +0.18% |
| FS | +307 Lbs | |
| CM\$ | +929 | |
| GM\$ | +886 | |
| FM\$ | +887 | |

| Health & Fertility | | |
|--------------------|------|---------|
| PL | +4.6 | 89% Rel |
| LIV | +1.8 | 76% Rel |
| DPR | -0.9 | 90% Rel |
| SCS | 2.95 | 95% Rel |
| HCR | +3.4 | 89% Rel |
| CCR | +0.8 | 90% Rel |
| CDN MSP | 104 | |
| CDN MT | 101 | |
| AHI | 100 | |

Recessives HH1T, HH2T, HH3T, HH4T, HH5T, HH6T, MWT, TC, TD, TL, TN, TR, TS, TV, TY

| Calving Traits | | | |
|----------------|------|---------|---------|
| SCE | 1.4% | 95% Rel | 774 Obs |
| DCE | 1.9% | 87% Rel | 147 Obs |
| SSB | 5.5% | 89% Rel | 666 Obs |
| DSB | 4.2% | 83% Rel | 142 Obs |

Pedigree

- SIRE: DE-SU 13961 SANJAY-ET
- DAM: GENOSOURCE RDELTA 32651-ET
- MGS: MR MOGUL DELTA 1427-ET
- MGD: SANDY-VALLEY ROBUST RUBY-ET
- MGGS: ROYLANE SOCRA ROBUST-ET

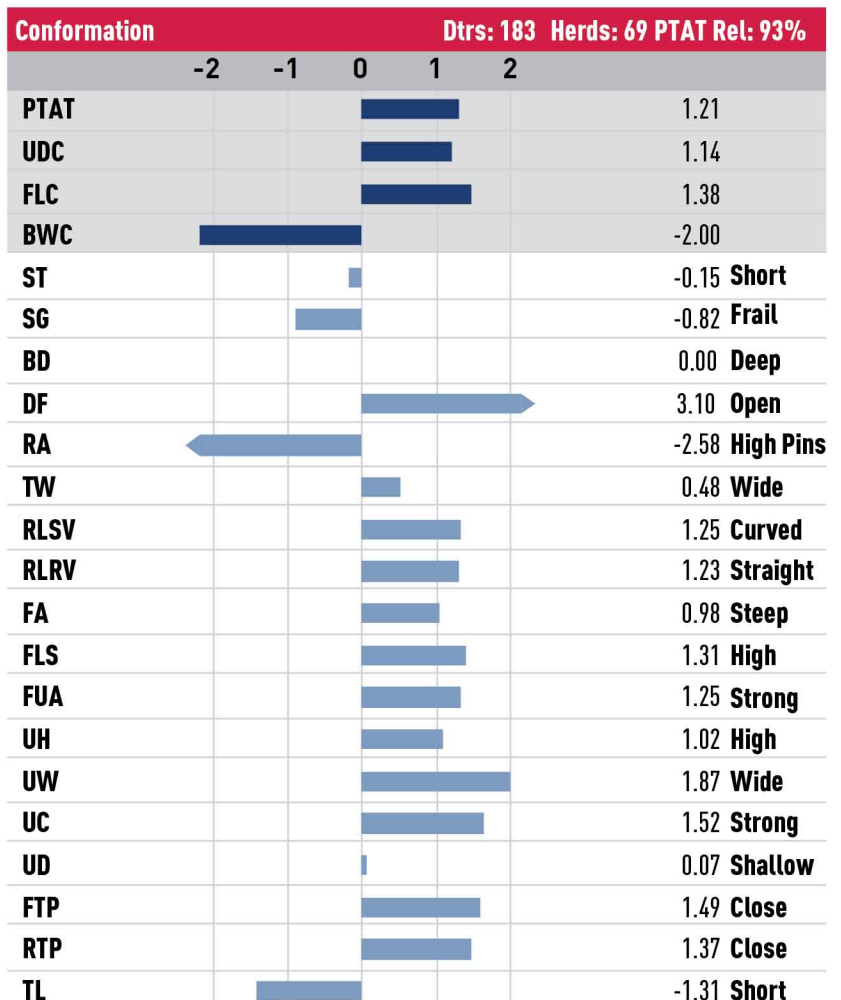
Real World Data

TransitionRight® ★★★

Bull Fertility Conv ★★

2033 Obs

| | |
|-----------------|------------------------|
| Reg. Number | 003143060882 |
| Reg. Name | DENOVO 2981 SHELDON-ET |
| Registry Status | 99%-I |
| Date of Birth | 2018-10-20 |
| EFI | 10.7% |
| aAa | 243 |
| DMS | |
| Kappa Casein | BB |
| Beta Casein | A2/A2 |
| CDCB | 12/2023 |
| Controller | ABS Global |





DAM: De-Su Frazzled 6984-ET GP-84

Pedigree

- SIRE: DENOVO 2981 SHELDON-ET
- DAM: DE-SU FRAZZLED 6984-ET
- MGS: MELARRY JOSUPER FRAZZLED-ED
- MGD: DE-SU DELTA 4900-ET
- MGGS: MR MOGUL DELTA 1427-ET

Real World Data

TransitionRight® ★★★★★
 Bull Fertility Conv ★★★★★
 1220 Obs

| | |
|-----------------|-----------------------|
| Reg. Number | 003216859391 |
| Reg. Name | DENOVO 16970 SKEET-ET |
| Registry Status | 99%-I |
| Date of Birth | 2020-05-15 |
| EFI | 11.1% |
| aAa | |
| DMS | |
| Kappa Casein | AB |
| Beta Casein | A2/A2 |
| CDCB | 1 2/2023 |
| Controller | ABS Global |

NM\$: +1060

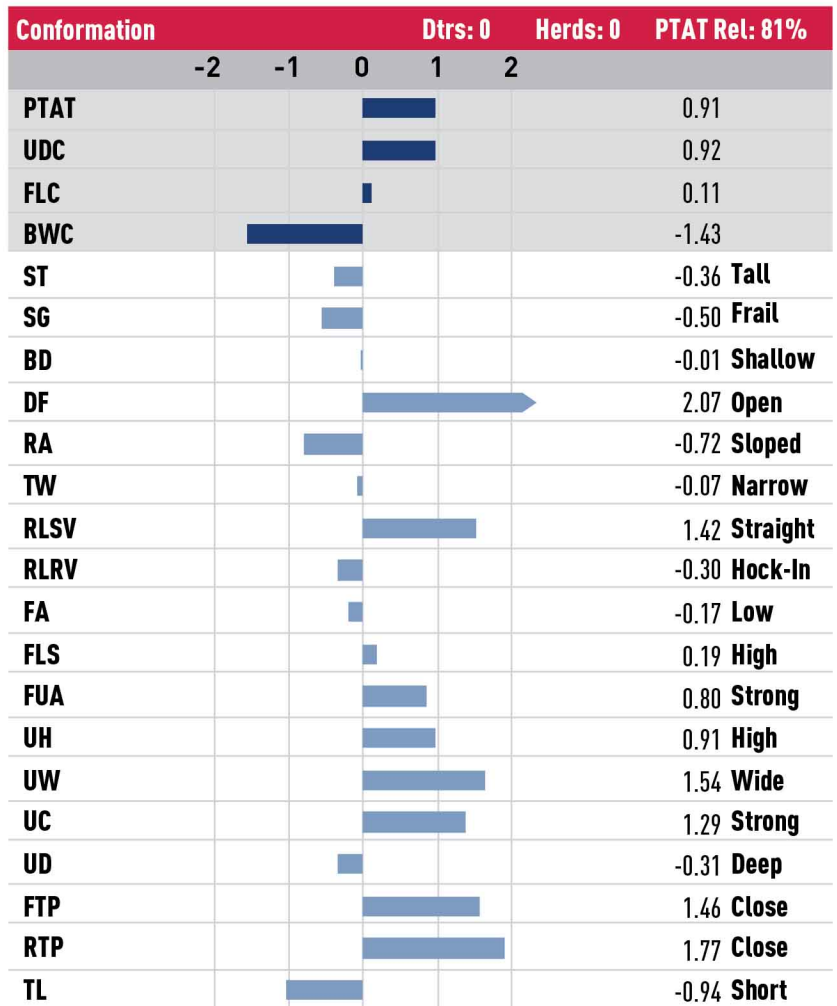
TPI®: +2906

| Production | Dtrs: 0 | Herds: 0 |
|------------|-----------|----------|
| Milk | +1628 Lbs | 83% Rel |
| Pro | +53 Lbs | +0.01% |
| Fat | +104 Lbs | +0.14% |
| FS | +310 Lbs | |
| CM\$ | +1067 | |
| GM\$ | +990 | |
| FM\$ | +1033 | |

| Health & Fertility | | |
|--------------------|------|---------|
| PL | +5.6 | 78% Rel |
| LIV | +2.0 | 73% Rel |
| DPR | -1.4 | 79% Rel |
| SCS | 2.77 | 81% Rel |
| HCR | +0.4 | 77% Rel |
| CCR | 0.0 | 78% Rel |
| CDN MSP | 104 | |
| CDN MT | 97 | |
| AHI | 104 | |

Recessives HH1T, HH2T, HH3T, HH4T, HH5T, HH6T, MWT, TC, TD, TL, TN, TR, TS, TV, TY

| Calving Traits | | | |
|----------------|------|---------|---------|
| SCE | 1.6% | 91% Rel | 415 Obs |
| DCE | 2.1% | 69% Rel | 0 Obs |
| SSB | 5.2% | 85% Rel | 415 Obs |
| DSB | 3.6% | 64% Rel | 0 Obs |





DTR: ABS Spectre 7193, De Novo Genetics LLC, New Albin, IA

NM\$: +716

TPI®: +2603

Production Dtrs: 14853 Herds: 2376

| | | |
|------|-----------|---------|
| Milk | +1235 Lbs | 99% Rel |
| Pro | +46 Lbs | +0.03% |
| Fat | +111 Lbs | +0.22% |
| FS | +74 Lbs | |
| CM\$ | +722 | |
| GM\$ | +658 | |
| FM\$ | +673 | |

Health & Fertility

| | | |
|---------|------|---------|
| PL | +1.1 | 99% Rel |
| LIV | -1.2 | 94% Rel |
| DPR | -3.5 | 98% Rel |
| SCS | 2.94 | 99% Rel |
| HCR | +0.7 | 98% Rel |
| CCR | -1.5 | 98% Rel |
| CDN MSP | 99 | |
| CDN MT | 98 | |
| AHI | 78 | |

Recessives HH1T, HH2T, HH3T, HH4T, HH5T, HH6T, MWT, TC, TD, TL, TN, TR, TV, TY

Calving Traits

| | | | |
|-----|------|---------|----------|
| SCE | 1.5% | 99% Rel | 3832 Obs |
| DCE | 1.8% | 97% Rel | 1260 Obs |
| SSB | 5.2% | 97% Rel | 3557 Obs |
| DSB | 4.6% | 97% Rel | 1121 Obs |

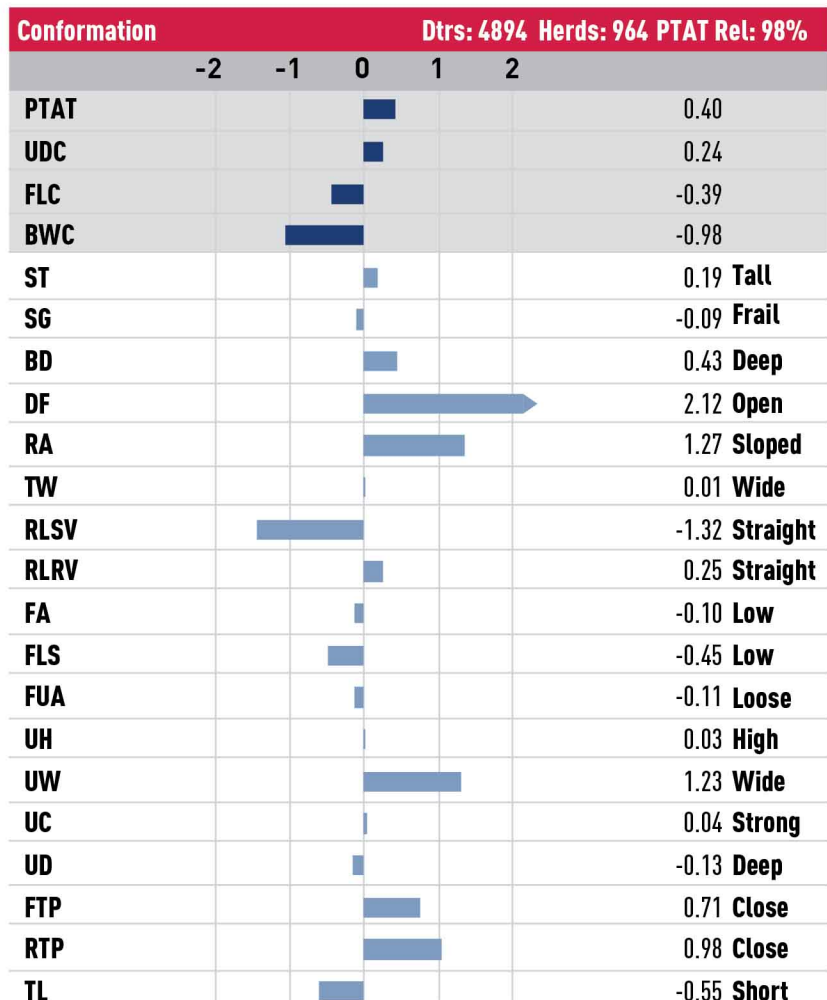
Pedigree

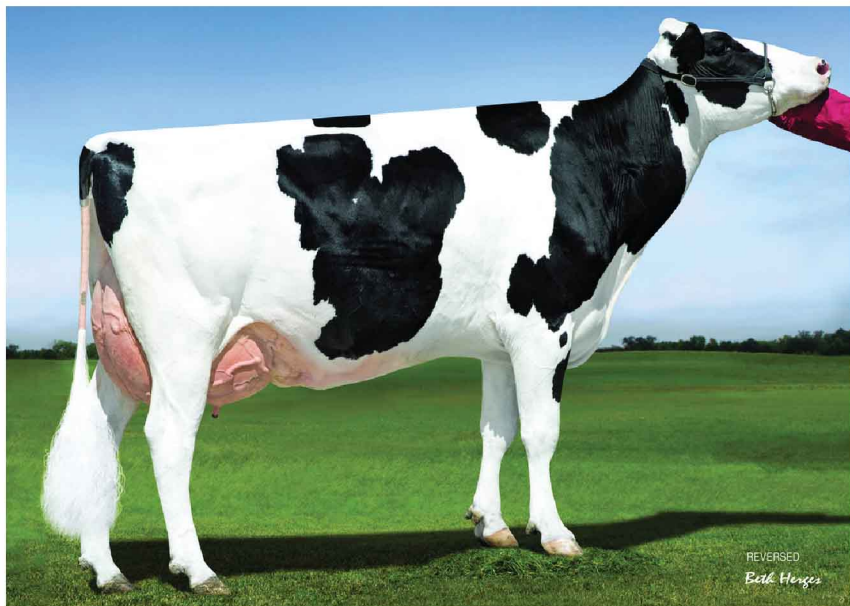
- SIRE: WOODCREST MOGUL YODER-ET
- DAM: DE-SU SUPERSIRE 3349-ET
- MGS: SEAGULL-BAY SUPERSIRE-ET
- MGD: CLEAR-ECHO M-O-M 2150-ET
- MGGS: LONG-LANGS OMAN OMAN-ET

Real World Data

TransitionRight® ★
 Bull Fertility Conv ★★★
 554 Obs

| | |
|-----------------|------------------------|
| Reg. Number | 0031330010295 |
| Reg. Name | DE-SU 13050 SPECTRE-ET |
| Registry Status | 99%-I |
| Date of Birth | 2015-08-12 |
| EFI | 11.2% |
| aAa | 165 |
| DMS | |
| Kappa Casein | AB |
| Beta Casein | A2/A2 |
| CDCB | 12/2023 |
| Controller | ABS Global |





5TH DAM: Sandy-Valley Robust Ruby-ET EX-90

NM\$: +914

TPI®: +2836

| Production | | Dtrs: 0 Herds: 0 |
|------------|----------|------------------|
| Milk | +985 Lbs | 82% Rel |
| Pro | +51 Lbs | +0.07% |
| Fat | +93 Lbs | +0.19% |
| FS | +78 Lbs | |
| CM\$ | +932 | |
| GM\$ | +845 | |
| FM\$ | +805 | |

| Health & Fertility | | |
|--------------------|------|---------|
| PL | +5.3 | 77% Rel |
| LIV | +1.7 | 72% Rel |
| DPR | -1.1 | 77% Rel |
| SCS | 2.73 | 79% Rel |
| HCR | +3.0 | 75% Rel |
| CCR | +0.9 | 77% Rel |
| CDN MSP | 106 | |
| CDN MT | 99 | |
| AHI | 96 | |

Recessives HH1T, HH2T, HH3T, HH4T, HH5T, HH6T, MWT, TC, TD, TL, TN, TR, TS, TV, TY

| Calving Traits | | | |
|----------------|------|---------|---------|
| SCE | 1.6% | 85% Rel | 147 Obs |
| DCE | 2.2% | 71% Rel | 0 Obs |
| SSB | 5.4% | 75% Rel | 119 Obs |
| DSB | 5.0% | 65% Rel | 0 Obs |

Pedigree

- SIRE: DENOVO 2981 SHELDON-ET
- DAM: DENOVO CRIMSON 10029-ET
- MGS: ABS CRIMSON-ET
- MGD: WESTCOAST MONTANA RIZA 4702-ET
- MGGS: IHG MONTANA-ET

Real World Data

TransitionRight® ★★★

Bull Fertility Conv ★★

3049 Obs

| | |
|-----------------|-----------------------|
| Reg. Number | 003127591246 |
| Reg. Name | DENOVO 3648 SUTTON-ET |
| Registry Status | 99%-I |
| Date of Birth | 2020-06-17 |
| EFI | 10.6% |
| aAa | |
| DMS | |
| Kappa Casein | BB |
| Beta Casein | A2/A2 |
| CDCB | 1 2/2023 |
| Controller | ABS Global |

| Conformation | Dtrs: 0 Herds: 0 PTAT Rel: 80% | | | | |
|--------------|--------------------------------|----|---|---|-----------------|
| | -2 | -1 | 0 | 1 | 2 |
| PTAT | | | | | 0.85 |
| UDC | | | | | 0.91 |
| FLC | | | | | 0.22 |
| BWC | | | | | -0.78 |
| ST | | | | | -0.14 Short |
| SG | | | | | -0.09 Frail |
| BD | | | | | 0.17 Deep |
| DF | | | | | 1.47 Open |
| RA | | | | | -0.68 High Pins |
| TW | | | | | -0.01 Narrow |
| RLSV | | | | | -0.70 Straight |
| RLRV | | | | | 0.26 Straight |
| FA | | | | | 0.80 Steep |
| FLS | | | | | 0.12 High |
| FUA | | | | | 1.23 Strong |
| UH | | | | | 0.65 High |
| UW | | | | | 1.29 Wide |
| UC | | | | | 0.77 Strong |
| UD | | | | | 0.38 Shallow |
| FTP | | | | | 0.65 Close |
| RTP | | | | | 0.59 Close |
| TL | | | | | -0.51 Short |





FULL SISTER TO DAM: Level-Plain Acura Vent-ET VG-85

Pedigree

- SIRE: WINSTAR MENDEL-P-ET
- DAM: LEVEL-PLAIN ACURA VIBE-ET
- MGS: PINE-TREE ACURA-ET
- MGD: LEVEL-PLAIN ACH VIBRANT-ET
- MGGS: ABS ACHIEVER-ET

Real World Data

TransitionRight® ★★★

Bull Fertility Conv

| | |
|-----------------|-----------------------------|
| Reg. Number | 003239496461 |
| Reg. Name | LEVEL-PLAIN MENDEL VANTE-ET |
| Registry Status | 99%-I |
| Date of Birth | 2021-11-02 |
| EFI | 10.3% |
| aAa | 243 |
| DMS | |
| Kappa Casein | AB |
| Beta Casein | A2/A2 |
| CDCB | 12/2023 |
| Controller | ABS Global |

NM\$: +1062

TPI®: +2953

Production Dtrs: 0 Herds: 0

| | | |
|------|----------|---------|
| Milk | +855 Lbs | 82% Rel |
| Pro | +47 Lbs | +0.07% |
| Fat | +117 Lbs | +0.29% |
| FS | +302 Lbs | |
| CM\$ | +1078 | |
| GM\$ | +1021 | |
| FM\$ | +957 | |

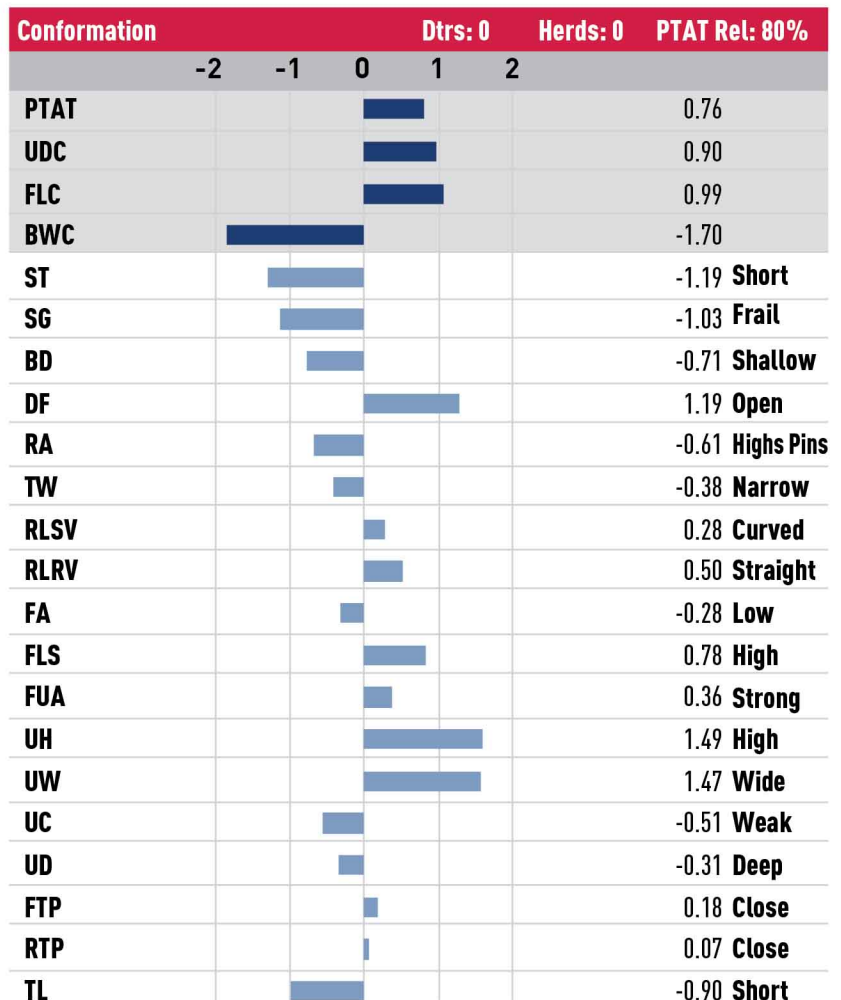
Health & Fertility

| | | |
|---------|------|---------|
| PL | +4.9 | 76% Rel |
| LIV | +2.3 | 73% Rel |
| DPR | -0.8 | 76% Rel |
| SCS | 2.83 | 79% Rel |
| HCR | +1.1 | 73% Rel |
| CCR | +0.3 | 85% Rel |
| CDN MSP | 98 | |
| CDN MT | 98 | |
| AHI | 95 | |

Recessives HH1T, HH2T, HH3T, HH4T, HH5T, HH6T, MWT, TC, TD, TL, TN, TP, TR, TV, TY

Calving Traits

| | | | |
|-----|------|---------|-------|
| SCE | 2.0% | 63% Rel | 0 Obs |
| DCE | 1.6% | 62% Rel | 0 Obs |
| SSB | 5.1% | 60% Rel | 0 Obs |
| DSB | 4.6% | 60% Rel | 0 Obs |





DAM: Kings-Ransom R Dontryathome VG-85

NM\$: +1146

TPI®: +3078

| Production | Dtrs: 0 | Herds: 0 |
|------------|-----------|----------|
| Milk | +1423 Lbs | 84% Rel |
| Pro | +63 Lbs | +0.06% |
| Fat | +104 Lbs | +0.17% |
| FS | +203 Lbs | |
| CM\$ | +1159 | |
| GM\$ | +1098 | |
| FM\$ | +1048 | |

| Health & Fertility | | |
|--------------------|------|---------|
| PL | +6.6 | 79% Rel |
| LIV | +4.1 | 75% Rel |
| DPR | +0.3 | 77% Rel |
| SCS | 2.91 | 79% Rel |
| HCR | +2.2 | 77% Rel |
| CCR | +1.1 | 77% Rel |
| CDN MSP | 100 | |
| CDN MT | 102 | |
| AHI | 104 | |

Recessives HH1T, HH2T, HH3T, HH4T, HH5T, HH6T, MWT, TC, TD, TL, TN, TR, TS, TV, TY

| Calving Traits | | | |
|----------------|------|---------|----------|
| SCE | 2.1% | 96% Rel | 1421 Obs |
| DCE | 1.9% | 82% Rel | 7 Obs |
| SSB | 5.7% | 91% Rel | 1421 Obs |
| DSB | 4.1% | 78% Rel | 7 Obs |

Pedigree

- SIRE: PINE-TREE ACURA-ET
- DAM: KINGS-RANSOM R DONTRYATHOME
- MGS: OCD FRANCHISE RIO-ET
- MGD: KINGS-RANSOM M DELICIOUS-ET
- MGGS: BACON-HILL PETY MODESTY-ET

Real World Data

TransitionRight® ★★★★★

Bull Fertility Conv ★★★★★

4853 Obs

| | |
|-----------------|-----------------------|
| Reg. Number | 003208834966 |
| Reg. Name | KINGS-RANSOM DUFFY-ET |
| Registry Status | 99%-I |
| Date of Birth | 2020-01-01 |
| EFI | 10.4% |
| aAa | 234 |
| DMS | |
| Kappa Casein | AB |
| Beta Casein | A2/A2 |
| CDCB | 12/2023 |
| Controller | ABS Global |

| Conformation | Dtrs: 0 Herds: 0 PTAT Rel: 81% | | | | |
|--------------|--------------------------------|----|---|---|-----------------|
| | -2 | -1 | 0 | 1 | 2 |
| PTAT | | | | | 1.07 |
| UDC | | | | | 1.31 |
| FLC | | | | | 1.20 |
| BWC | | | | | -0.98 |
| ST | | | | | -0.98 Short |
| SG | | | | | -0.56 Frail |
| BD | | | | | -0.59 Shallow |
| DF | | | | | 0.54 Open |
| RA | | | | | -0.10 High Pins |
| TW | | | | | -0.31 Narrow |
| RLSV | | | | | -0.40 Straight |
| RLRV | | | | | 1.05 Straight |
| FA | | | | | 0.33 Steep |
| FLS | | | | | 0.91 High |
| FUA | | | | | 0.95 Strong |
| UH | | | | | 1.59 High |
| UW | | | | | 1.72 Wide |
| UC | | | | | 0.18 Strong |
| UD | | | | | 0.18 Shallow |
| FTP | | | | | 0.41 Close |
| RTP | | | | | 0.51 Close |
| TL | | | | | -0.10 Short |





BULL: 29H020291-Calmac RUW TRICKY-RED-12mths

NM\$: +969

TPI®: +2945

| Production | | Dtrs: 0 Herds: 0 |
|------------|-----------|------------------|
| Milk | +1722 Lbs | 81% Rel |
| Pro | +63 Lbs | +0.03% |
| Fat | +74 Lbs | +0.03% |
| FS | -24 Lbs | |
| CM\$ | +980 | |
| GM\$ | +929 | |
| FM\$ | +908 | |

| Health & Fertility | | |
|--------------------|------|---------|
| PL | +6.6 | 75% Rel |
| LIV | +3.2 | 72% Rel |
| DPR | +1.5 | 74% Rel |
| SCS | 2.75 | 76% Rel |
| HCR | -0.1 | 72% Rel |
| CCR | +2.5 | 74% Rel |
| CDN MSP | 95 | |
| CDN MT | 100 | |
| AHI | 102 | |

Recessives HH1T, HH2T, HH3T, HH4T, HH5T, HH6T, MWT, RC, TC, TD, TL, TN, TP, TV, TY

| Calving Traits | | | |
|----------------|------|---------|-------|
| SCE | 1.8% | 61% Rel | 0 Obs |
| DCE | 1.9% | 58% Rel | 0 Obs |
| SSB | 5.5% | 57% Rel | 0 Obs |
| DSB | 4.0% | 56% Rel | 0 Obs |

Pedigree

- SIRE: ND-DRUVALE TROJAN-ET
- DAM: PROGENESIS MARK PERSEPHONE-ET
- MGS: WILDER MARK-ET
- MGD: PROGENESIS FABULOUS PEARL
- MGGS: PROGENESIS FABULOUS-ET

Real World Data

TransitionRight® ★★★★★

Bull Fertility Conv

| | |
|-----------------|----------------|
| Reg. Number | 000541801000 |
| Reg. Name | RUW TRICKY RED |
| Registry Status | 99%-I |
| Date of Birth | 2021-12-19 |
| EFI | 10.3% |
| aAa | |
| DMS | |
| Kappa Casein | BB |
| Beta Casein | A1/A2 |
| CDCB | 12/2023 |
| Controller | ABS Global |

| Conformation | Dtrs: 0 Herds: 0 PTAT Rel: 78% | | | | | |
|--------------|--------------------------------|----|-------|-------|---|------------------|
| | -2 | -1 | 0 | 1 | 2 | |
| PTAT | | | | [Bar] | | 1.35 |
| UDC | | | | [Bar] | | 1.43 |
| FLC | | | [Bar] | | | -0.41 |
| BWC | | | [Bar] | | | 0.19 |
| ST | | | | [Bar] | | 1.04 Tall |
| SG | | | | [Bar] | | 0.59 Strong |
| BD | | | | [Bar] | | 0.66 Deep |
| DF | | | | [Bar] | | 1.05 Open |
| RA | | | [Bar] | | | -0.20 Highs Pins |
| TW | | | [Bar] | | | -0.18 Narrow |
| RLSV | | | | [Bar] | | 0.68 Curved |
| RLRV | | | [Bar] | | | -0.58 Hock-In |
| FA | | | | [Bar] | | 0.02 Steep |
| FLS | | | | [Bar] | | -0.03 Low |
| FUA | | | | [Bar] | | 1.66 Strong |
| UH | | | | [Bar] | | 1.84 High |
| UW | | | | [Bar] | | 1.91 Wide |
| UC | | | | [Bar] | | 1.17 Strong |
| UD | | | | [Bar] | | 1.01 Shallow |
| FTP | | | | [Bar] | | 1.41 Close |
| RTP | | | | [Bar] | | 1.63 Close |
| TL | | | | [Bar] | | -0.03 Short |





MGD: JX Pine-Tree World Cup Dellia {5}-ET E-93%

CM\$: +391

JPI: +108

| Production | Dtrs:0 | Herds: 0 |
|------------|----------|----------|
| Milk | +818 Lbs | 78% Rel |
| Pro | +34 Lbs | +0.02% |
| Fat | +35 Lbs | -0.02% |
| NM\$ | +387 | |
| GM\$ | +318 | |
| FM\$ | +346 | |

| Health & Fertility | | |
|--------------------|-----------------------------------|---------|
| PL | +3.3 | 75% Rel |
| LIV | +1.5 | 66% Rel |
| DPR | -0.5 | 73% Rel |
| SCS | +3.09 | 77% Rel |
| HCR | +2.9 | 65% Rel |
| CCR | +0.4 | 73% Rel |
| Recessives | JH1F, JNSF, SMA F, TD, TL, TN, TS | |

Pedigree

- SIRE: CDF VICEROY-ET
- DAM: JX PINE-TREE ENZO DELLIA 1917 {4}-ET
- MGS: JX CLOVER PATCH AVON ENZO {3}
- MGD: JX PINE-TREE WORLD CUP DELLIA {5}-ET
- MGGS: JX CO-OP AD WORLD CUP {4}-ET

Real World Data

TransitionRight® ★★

Bull Fertility Conv

| | |
|---------------|-----------------------------|
| Reg. Number | 000067762309 |
| Reg. Name | JX PINE-TREE DANBURY {5}-ET |
| Date of Birth | 2020-03-11 |
| EFI | 10.7% |
| aAa | |
| DMS | |
| Kappa Casein | BB |
| Beta Casein | A2/A2 |
| CDCB | 12/2023 |
| Controller | ABS Global |

| Conformation | Dtrs: 0 Herds: 0 PTAT Rel: 81% | | | | |
|--------------|--------------------------------|----|---|---|-----------------|
| | -2 | -1 | 0 | 1 | 2 |
| PTAT | | | | | 1.40 |
| JUI | | | | | 21.50 |
| ST | | | | | 1.50 Tall |
| SG | | | | | 1.10 Strong |
| DF | | | | | 0.20 Open |
| RA | | | | | -1.30 High Pins |
| TW | | | | | 1.20 Wide |
| FA | | | | | 1.20 Steep |
| RLSV | | | | | -0.30 Straight |
| FUA | | | | | 3.70 Strong |
| UH | | | | | 1.50 High |
| UW | | | | | -0.30 Narrow |
| UC | | | | | -0.40 Week |
| UD | | | | | 2.50 Shallow |
| FTP | | | | | 0.90 Close |
| TL | | | | | -0.40 Short |
| RTP | | | | | 0.60 Close |





NM\$: +535

JPI®: +125

| Production | Dtrs: 0 | Herds: 0 |
|------------|----------|----------|
| Milk | +829 Lbs | 78% Rel |
| Pro | +34 Lbs | +0.02% |
| Fat | +58 Lbs | +0.08% |
| NM\$ | +525 | |
| GM\$ | +449 | |
| FM\$ | +475 | |

| Health & Fertility | | |
|--------------------|---------------------------------------|---------|
| PL | +3.3 | 73% Rel |
| LIV | +2.5 | 63% Rel |
| DPR | -1.3 | 70% Rel |
| SCS | +2.77 | 77% Rel |
| HCR | +1.6 | 63% Rel |
| CCR | 0.0 | 70% Rel |
| Recessives | JH1F, JNSF, SMA F, TD, TL, TN, TP, TS | |

Pedigree

- SIRE: TOG FEDERER 37562-P-ET
- DAM: TOG LOIS 37203-ET
- MGS: CDF LAYNE IVORY-ET
- MGD: TOG SHANNA R229 7624-ET
- MGGS: JER-Z-BOYZ PREMIUM {6}-ET

Real World Data

TransitionRight® ★★★

Bull Fertility Conv

| | |
|---------------|--------------|
| Reg. Number | 003217483540 |
| Reg. Name | TOG ROCKFORD |
| Date of Birth | 2021-03-13 |
| EFI | 8.3% |
| aAa | 426 |
| DMS | |
| Kappa Casein | BB |
| Beta Casein | A2/A2 |
| CDCB | 12/2023 |
| Controller | ABS Global |

| Conformation | Dtrs: 0 | | | | | Herds: 0 | PTAT Rel: 81% |
|--------------|---------|----|---|---|---|----------|---------------|
| | -2 | -1 | 0 | 1 | 2 | | |
| PTAT | | | | | | | 0.30 |
| JUI | | | | | | | 11.00 |
| ST | | | | | | | 0.80 Tall |
| SG | | | | | | | 0.70 Strong |
| DF | | | | | | | 1.00 Open |
| RA | | | | | | | 0.00 Sloped |
| TW | | | | | | | 0.40 Wide |
| FA | | | | | | | 0.50 Steep |
| RLSV | | | | | | | 0.10 Sickle |
| FUA | | | | | | | 0.20 Strong |
| UH | | | | | | | 0.80 High |
| UW | | | | | | | 0.90 Wide |
| UC | | | | | | | -0.20 Weak |
| UD | | | | | | | -0.50 Deep |
| FTP | | | | | | | -0.40 Wide |
| TL | | | | | | | 0.10 Long |
| RTP | | | | | | | -0.80 Wide |





BULL: 29BS3821 Pine-Tree 7088 HAMNSWISS ET

NM\$: +378

PPR: +113

| Production | Dtrs: 35 | Herds: 13 |
|------------|-----------|-----------|
| Milk | +1318 Lbs | 85% Rel |
| Pro | +40 Lbs | -0.02% |
| Fat | +28 Lbs | -0.11% |
| CM\$ | +383 | |
| GM\$ | +336 | |
| FM\$ | +368 | |

| Health & Fertility | | |
|--------------------|-------|---------|
| PL | +1.9 | 65% Rel |
| LIV | +0.9 | 48% Rel |
| DPR | -0.5 | 63% Rel |
| SCS | +2.77 | 73% Rel |
| HCR | +1.0 | 50% Rel |
| CCR | +0.3 | 59% Rel |

Recessives BH14t, BH2T, BHDT, SMA F, TN, TS, TW

| Calving Traits | | | |
|----------------|------|---------|---------|
| SCE | 1.7% | 76% Rel | 105 Obs |
| DCE | 2.3% | 70% Rel | 3 Obs |

Pedigree

- SIRE: JO-LANE DARIO HAMPTON ET
- DAM: PINE TREE DRIVER ALLIE ET
- MGS: HILLTOP ACRES DRIVER ET(D)*TM
- MGD: R HART BROOKINGS ATLANTA
- MGGS: R N R PAYOFF BROOKINGS ET *TM

| | |
|---------------|-----------------------------|
| Reg. Number | 003142332601 |
| Reg. Name | PINE-TREE 7088 HAMNSWISS ET |
| Date of Birth | 2018-03-13 |
| EFI | 8.0% |
| aAa | 426 |
| DMS | |
| Kappa Casein | BB |
| Beta Casein | A2/A2 |
| CDCB | 12/2023 |
| Controller | ABS Global |

| Conformation | Dtrs: 12 Herds: 5 PTAT Rel: 78% | | | | |
|--------------|---------------------------------|----|---|---|---|
| | -2 | -1 | 0 | 1 | 2 |
| PTAT | | | | | |
| UDC | | | | | |
| ST | | | | | |
| SG | | | | | |
| DF | | | | | |
| RA | | | | | |
| TW | | | | | |
| RLSV | | | | | |
| RLRV | | | | | |
| FA | | | | | |
| FUA | | | | | |
| UH | | | | | |
| UW | | | | | |
| UC | | | | | |
| UD | | | | | |
| FTP | | | | | |
| TL | | | | | |



PROGENY

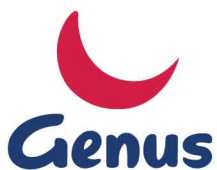
Early data indicates he produces high calving ease progeny, that are small born Not eligible for pedigree registrations.

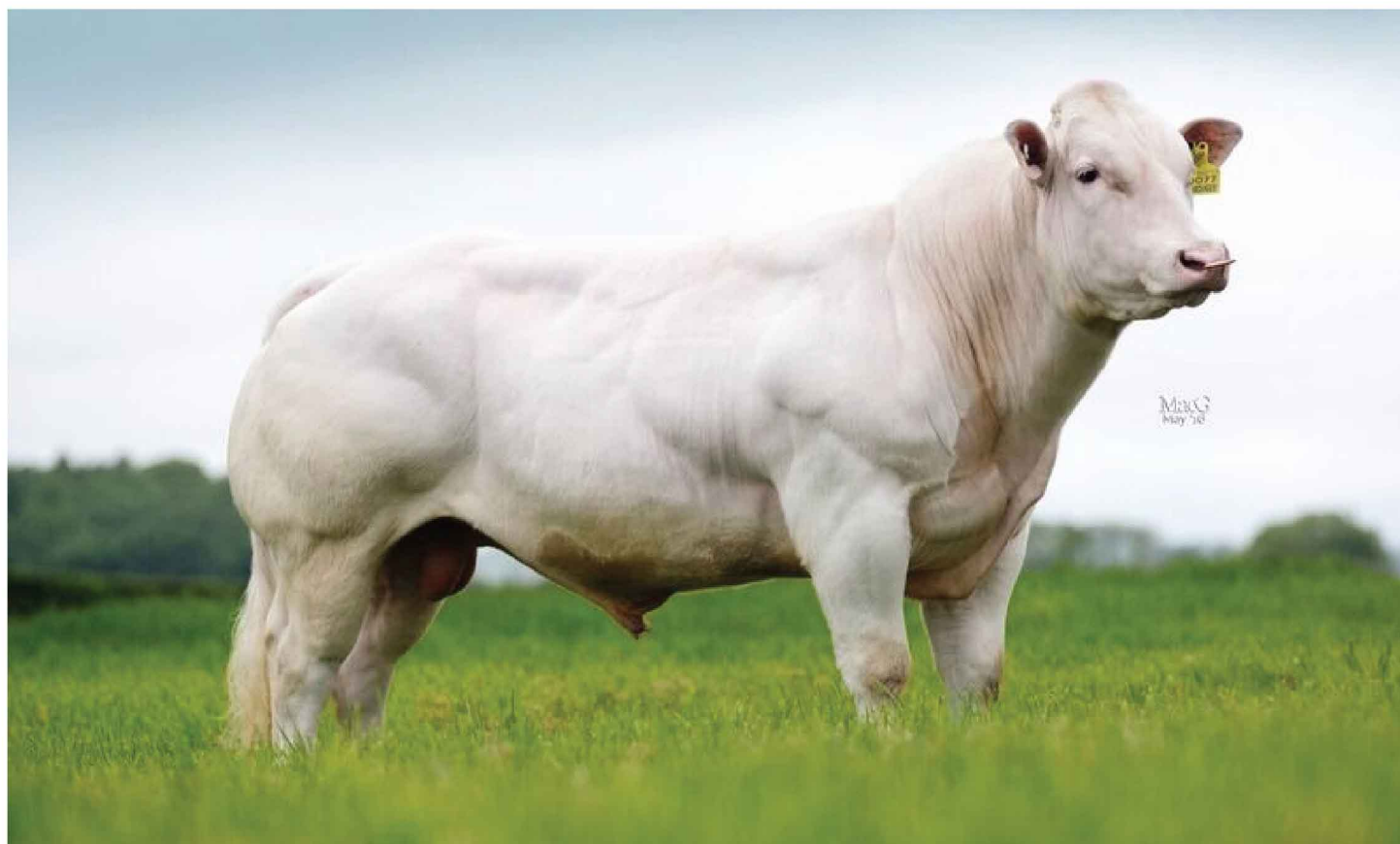
| BeefAdvantage™ | | £32,24 |
|----------------|-----|--------|
| Calves | 192 | Herds |
| Reliability | ★ | |

| NuEra T14 0144 | |
|----------------|---------------------------|
| Ear Tag No | 19801314(US)45 |
| Genus Code | AA1749 |
| NAAB | 29XB0144 |
| Sire | Springfield Ramesses 6124 |
| Dam | NuEra T14 E0851 |
| MGS | R5 Monument |

Genus Beef Calving Survey on Dairy Cows Only

| | | Proven Statistic | Genus ABS Breed Avg. |
|-------------------|--|------------------|----------------------|
| CE (Heifers) BSI | | 130 | 0.5% |
| CE (Cows) BSI | | 128 | 0.4% |
| Gest Length BSI | | 100 | 282 |
| Calf Qualifty BSI | | 104 | 53% |
| Calf Mort BSI | | 130 | 1.2% |





GREYSTONE JARDINIER

GENEadvance[®] Accelerate your Genetic Improvement

You set your goals. We help you reach them.



Profit from Genetic Progress





GENEadvance® Accelerate Your Genetic Improvement

You set your goals. We help you reach them.

Every day you make decisions as a dairy producer. But, of all the decisions you make, genetic selection is the most important in terms of the future success of your operation. The genetics you use in your herd will affect your dairy's profitability for years to come. That's why we offer a complete solutions approach and take that guesswork away with GENEadvance®.

- » GENETIC ANALYSIS
- » PERSONALIZED GOALS
- » CUSTOM INDEX
- » PRECISION BREEDING
- » GENETIC REVIEW



We start by understanding your goals, analyzing the genetics in your herd, selecting the right genetics to maximize your breeding program, and deploying the right genetics on the right cows. **Because precision is key for genetic progress.**

Why GENEadvance is Right for your Operation:



Guidance on Genetic Goals and Strategy



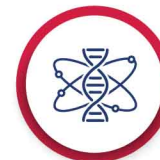
Customized Genetic Plan



Monitor & Optimize Heifer Creation



Early Access to World-leading Genetics



Genomic Testing for Informed Decisions



Maximize Your Sexcel® and Beef InFocus™ Strategy



Genetic Reviews to Monitor Progress



Bundle Additional Products and Services

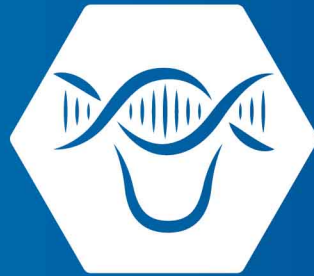


Digital Tools for Efficient Genomic Sampling and Data Analysis



Differentiated Billing Options

Contact your local ABS Representative to accelerate your genetic improvement today with GENEadvance.



Fatih Mh. Sanayi Cd. A1 No: 4B 35414 Gaziemir / İZMİR
info@netgenetik.com

www.NETGENETİK.COM